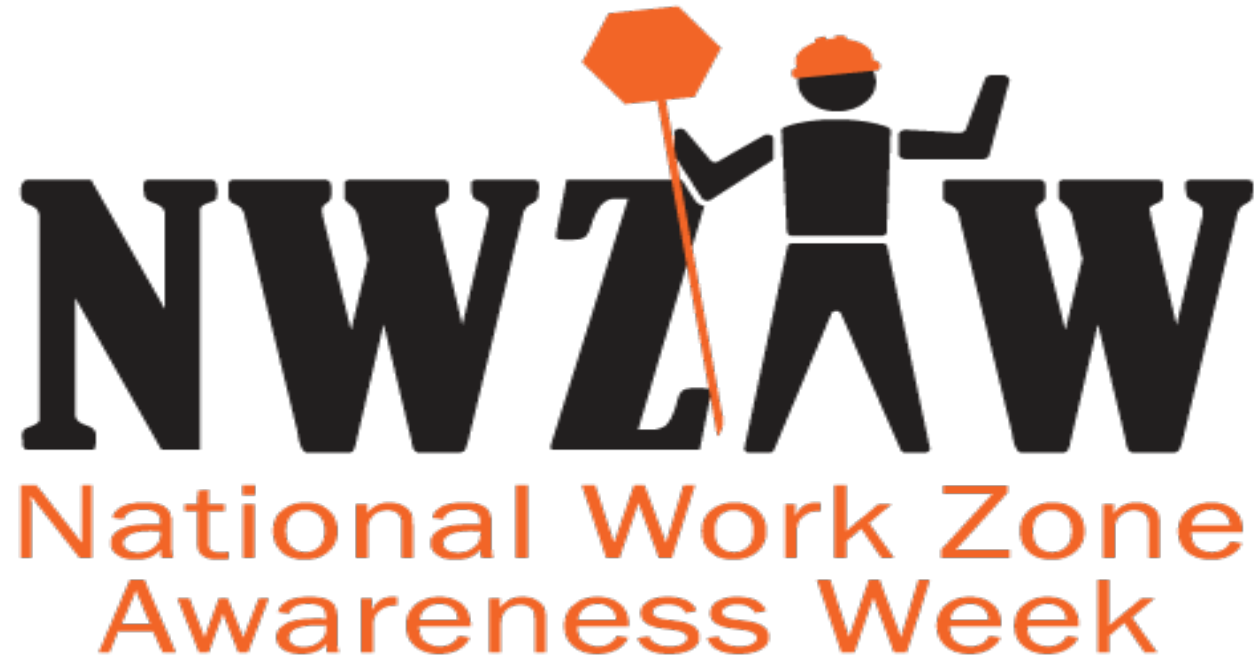


Tips for Traveling Safely in Work Zones



April 26 – 30, 2021



Brought to you by GEORGIA STRUCK-BY ALLIANCE PARTICIPANTS



WORK ZONE CRASHES BY THE NUMBERS

1



WORK ZONE CRASH
OCCURS EVERY
5.4 MINUTES

70



WORK ZONE CRASHES
RESULT IN INJURIES
EACH DAY

12



WORK ZONE CRASHES
RESULT IN FATALITIES
EACH WEEK



Source: Federal Highway Administration:
Work Zone Management Program – Facts and Statistics – Work Zone Safety

OUR ROADS SAFETY
Partnership for Responsible Driving

www.ShareTheRoadSafely.gov



PLAN AHEAD

RESEARCH YOUR
ROUTE TO PREPARE
FOR WORK ZONES

USE MARKED DETOURS
WHEN POSSIBLE



OUR ROADS SAFETY
Partnership for Responsible Driving

www.ShareTheRoadSafely.gov



STAY FOCUSED



WHEN TRAVELING THROUGH WORK ZONES, **AVOID ALL DISTRACTIONS**



PROTECT WORKERS



GIVE WORKERS
EXTRA ROOM

SLOW DOWN AS
YOU APPROACH
WORKERS

**BE PREPARED
TO STOP**

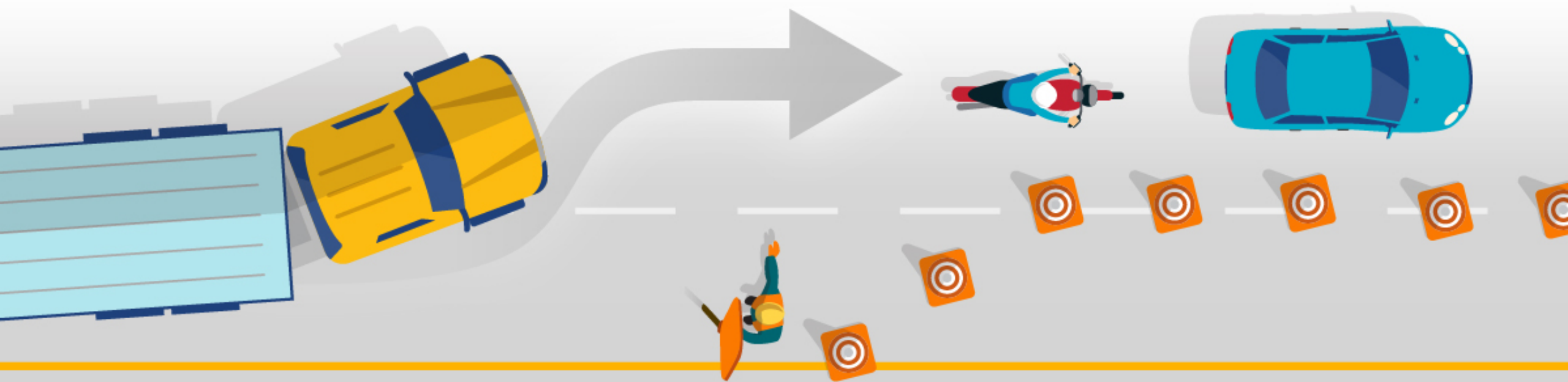
OUR ROADS SAFETY
Partnership for **Responsible Driving**

www.ShareTheRoadSafely.gov



MOVE EARLY INTO OPEN LANES

DURING **WORK ZONE TRAFFIC SHIFTS**



OUR ROADS SAFETY
Partnership for Responsible Driving

www.ShareTheRoadSafely.gov



KEEP YOUR DISTANCE

NEVER CUT OFF A TRUCK OR BUS



OUR ROADS SAFETY
Partnership for **Responsible Driving**

www.ShareTheRoadSafely.gov

