



ATLANTA BUSINESS CHRONICLE

B SECTION | JUNE 10-16, 2022

SPECIAL REPORT

BUILD GEORGIA AWARDS

Celebrating the highest achievements in construction among the 600 member firms of the Associated General Contractors of Georgia

The Associated General Contractors of Georgia's Build Georgia Awards recognize excellence in the construction industry. Winning projects represent the best the construction industry has to offer by both general contractors and specialty contractors. Companies that worked on the 85 winning projects in 2022 overcame numerous challenges, from material shortages to complex requirements and difficult sites, and persevered. Projects had to be located in Georgia and completed during the calendar year 2021.

Winning projects met the following criteria, according to AGC Georgia:

- ▶ Exceptional project safety performance
 - ▶ Overcoming the challenges of a difficult project
 - ▶ Innovation in construction techniques and materials
 - ▶ Excellence in project management and scheduling
 - ▶ Dedication to client service and customer care
- Stories in this section are grouped by general or specialty contracting, and then by contract amount of the project or type of specialty.

On pages 14B, general contractor firm leaders tell us what is keeping them up at night.

AGC Georgia will present the awards at its convention June 9-12 at Hilton Sandestin Beach Golf Resort & Spa in Miramar Beach, Fla.

IN PARTNERSHIP WITH





BATSON-COOK CONSTRUCTION

CONSTRUCTION MANAGEMENT AT RISK

- New
- Batson-Cook Construction - Heritage Residence Hall

Challenges building the Heritage Residence Hall at the nonprofit Impact 360 Institute in Pine Mountain included costs and delivery of materials impacting the schedule and budget.



BATSON-COOK CONSTRUCTION

CONSTRUCTION MANAGEMENT AT RISK

- New
- Batson-Cook Construction - Northside Hospital Cherokee Vertical Expansion Levels 9 and 10

This project was a two-story vertical addition atop an existing patient tower in Canton. Levels 9 and 10 added 80 rooms and adjacent support spaces.



BATSON-COOK CONSTRUCTION

CONSTRUCTION MANAGEMENT AT RISK

- New
- Batson-Cook Construction - Northside Hospital Forsyth Vertical Expansion

This project added two new patient floors on top of the existing, occupied hospital facility with 64 patient rooms and support spaces.



BRASFIELD & GORRIE

CONSTRUCTION MANAGEMENT AT RISK

- New
- Brasfield & Gorrie - Berry College McAllister Hall Animal Science Addition

Berry College's \$15.7 million, 23,000-square-foot animal science facility opened in the fall of 2021 on the Mount Berry campus.



RICK HOLLIDAY

CONSTRUCTION MANAGEMENT AT RISK

- New
- Brasfield & Gorrie - Mercer University School of Medicine

Brasfield & Gorrie worked with the architect to determine the best onsite layout for the building for the new medical school campus in Columbus, among other project accomplishments.



MARC MAULDIN

CONSTRUCTION MANAGEMENT AT RISK

- New
- Brasfield & Gorrie - Kingsboro at Lenbrook

The 35-year-old Lenbrook Life Plan Community, located on a small site in Buckhead, decided to expand on the only available adjacent land. It included four buildings and a parking deck.



BRASFIELD & GORRIE

CONSTRUCTION MANAGEMENT AT RISK

- New
- Brasfield & Gorrie - 1105 West Peachtree

Brasfield & Gorrie helped deliver the final \$325 million, 1.77-million-square-foot mixed use development in Midtown Atlanta under a design-assist role.



BRASFIELD & GORRIE

CONSTRUCTION MANAGEMENT AT RISK

- New
- Brasfield & Gorrie - Emory Musculoskeletal Institute

This 180,000-square-foot, 6-story building located in Emory's Executive Park health innovation district in Brookhaven includes treatment in orthopedics and spine care.



RICK HOLLIDAY

CONSTRUCTION MANAGEMENT AT RISK

- New
- Brasfield & Gorrie - TK Elevator Test Tower and IQC

The project represents Cobb County's tallest building and the tallest test tower in the U.S. The challenges included being boxed in on three sides and onsite gas pipelines.



CARROLL DANIEL CONSTRUCTION

CONSTRUCTION MANAGEMENT AT RISK

- New
- Carroll Daniel Construction - Lawrenceville Arts Center

The center in downtown Lawrenceville is the new home for Georgia's second-largest professional theater company. It has one of the largest stages in the state. The main theater seats 500.



CARROLL DANIEL CONSTRUCTION

CONSTRUCTION MANAGEMENT AT RISK

- New
- Carroll Daniel Construction - New Jackson County High School

The new 250,000-square-foot Jackson County High School, located on a 142-acre site in Hoschton, replaced the 30-year-old Jackson County Comprehensive High School.



KIP RAMSEY

CONSTRUCTION MANAGEMENT AT RISK

- New
- Gilbane Building Co. - Gwinnett Justice and Administration Center Courthouse Addition

Gilbane used new technologies, coordination and customer care to construct the project, which included a security node and courthouse addition.



DAVID SUNDBERG | ESTO

CONSTRUCTION MANAGEMENT AT RISK

- New
- Holder Construction - Norfolk Southern Headquarters

This 750,000-square-foot building is located on a 3.4-acre campus in Tech Square in Midtown Atlanta. Sustainability and employee health and wellness were priorities.



HOLDER CONSTRUCTION

CONSTRUCTION MANAGEMENT AT RISK

- New
- Holder Construction - Interdisciplinary STEM Research Building at University of Georgia

The 100,000-square-foot, 4-story building is located in the middle of South Campus at the University of Georgia in Athens.



JE DUNN CONSTRUCTION

CONSTRUCTION MANAGEMENT AT RISK

- New
- JE Dunn Construction - 712 West Peachtree

This 310,000-square-foot, 20-story office development in Tech Square in Atlanta is adjacent to Anthem Technology Center at 740 West Peachtree.



RION RIZZO | CREATIVE SOURCE

CONSTRUCTION MANAGEMENT AT RISK

- New
- New South Construction Co. - Georgia Municipal Association New Headquarters & Parking Deck

This project, built on less than one acre that contained an existing 1902s 3-story building, included a new office building and a new parking deck.

INNOVATING ON A STRONG FOUNDATION

COVID, supply chain disruptions, inflation and workforce shortages - through it all, construction continues to be a driving force in Georgia's economy.

AGC Georgia has been a trusted advocate and resource for its member firms for nearly a century. We are proud to help construction firms find innovative ways to thrive in today's evolving marketplace.



We appreciate the support of our 2022 Elite Sponsors!



BROWN NELMS
Certified Public Accountants

CompTrustAGC
Mutual Captive Insurance Company



iSqFt
a ConstructConnect™ company



TMC
MOORE COLSON
CPAs and Advisors

USA
READY MIX USA

SMITH+HOWARD
CPAs and Advisors

SMITH CURRIE
& HANCOCK LLP

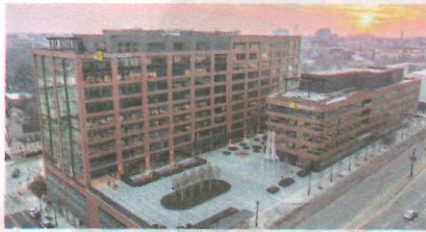
YATES
Bonds & Insurance

AGC

Georgia

The Construction Association

Associated General Contractors of Georgia, Inc. ■ www.agcga.org



AERIAL INNOVATION SOUTHEAST

CONSTRUCTION MANAGEMENT AT RISK

- New
- New South Construction Co. - Atlantic Yards

Atlantic Yards in Atlantic Station in Midtown Atlanta features two office buildings which total 16 levels atop a three-story, 890-space parking deck.

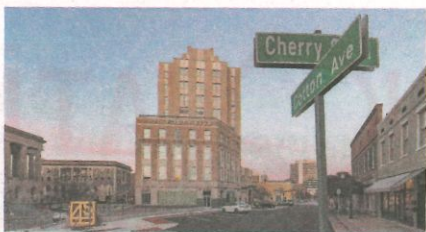


RION RISSO | CREATIVE SOURCE

CONSTRUCTION MANAGEMENT AT RISK

- New
- New South Construction Co. - Peachtree Hills Place

The life plan community in Atlanta was built in phases, with the first including 117 units across five buildings, 82 units of assisted living, and site planning for 12 detached single-family homes.



KEVIN GRIGGS

CONSTRUCTION MANAGEMENT AT RISK

- Renovation
- Choate Construction Co. - Hotel Forty Five

This renovation of an historic 11-story former bank building is now the first boutique hotel in downtown Macon, a Marriott Tribute Collection location.



BRIAN CRUMB

CONSTRUCTION MANAGEMENT AT RISK

- Renovation
- Gilbane Building Co. - American Cancer Society Hope Lodge - Atlanta

Gilbane led the renovation of a 48,000-square-foot lodging facility for the American Cancer Society Hope Lodge in the center of the Emory University campus in Decatur.



CARROLL DANIEL CONSTRUCTION

DESIGN-BUILD

- New
- Carroll Daniel Construction - Kubota Manufacturing of America Research & Development Center

The center located on 150 acres in Gainesville is the first of its kind in North America for the company.



NEW SOUTH CONSTRUCTION CO.

DESIGN-BUILD

- New
- New South Construction Co. - The City of Newnan Parks Project: C.J. Smith/Lynch Park Modifications

The city's existing ballfields at each location needed an upgrade; many of the buildings dated to the 1960s.



CARROLL DANIEL CONSTRUCTION

DESIGN-BID-BUILD

- New
- Carroll Daniel Construction - Osborne High School Rebuild

The project for the Cobb County School District created new facilities for the county's oldest high school. The project took nearly four years.

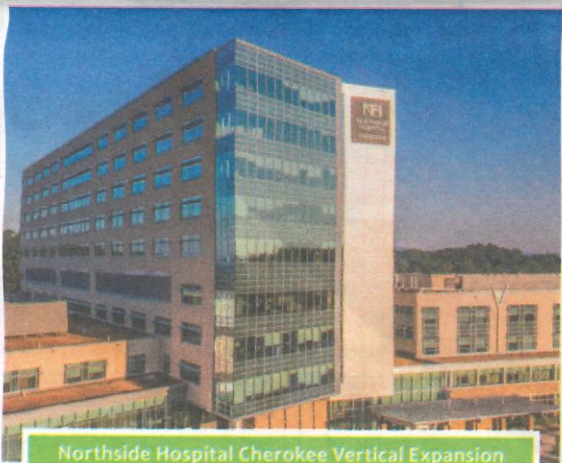


CARROLL DANIEL CONSTRUCTION

DESIGN-BID-BUILD

- New
- Carroll Daniel Construction - East Forsyth High School

North Forsyth had planned for its next high school for decades. The 431,366-square-foot high school has capacity for more than 2,000 students.



Northside Hospital Cherokee Vertical Expansion
Levels 9 & 10 - First Place



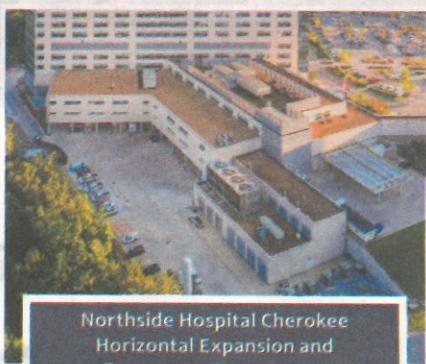
Heritage Residence Hall - First Place



Northside Hospital Forsyth
Vertical Expansion - First Place



The Beacon Parking Deck
- Merit Award



Northside Hospital Cherokee
Horizontal Expansion and
Emergency Department
Renovation - Merit Award

BC
BATSON-COOK
CONSTRUCTION

CONGRATULATIONS TO THE PROJECT TEAMS
WHO BUILT THESE WONDERFUL FACILITIES

Batson-Cook.com



KAJIMA BUILDING & DESIGN GROUP INC.

DESIGN-BID-BUILD

- New
- Kajima Building & Design Group Inc. - Fulton Industrial Boulevard - Phase I

Kajima built Fulton Industrial Boulevard, a project comprised of three speculative warehouse buildings totaling 882,070 square feet, on approximately 92 wooded acres. It included sitework with three ponds.



BALFOUR BEATTY

CONSTRUCTION MANAGEMENT AT RISK

- New
- Balfour Beatty - West Manor Elementary School Additions & Renovations

West Manor Elementary School is an International Baccalaureate World School located in the southwest Atlanta community of Lynhurst.



BALFOUR BEATTY

CONSTRUCTION MANAGEMENT AT RISK

- New
- Balfour Beatty - Thompson Savannah Hotel

Thompson Savannah is a 193-key luxury boutique hotel on the Savannah River, the tallest recent development in Savannah, and sits prominently at the center of Eastern Wharf.



THOMAS WATKINS PHOTOGRAPHY

CONSTRUCTION MANAGEMENT AT RISK

- New
- Juneau Construction Co. - Element Galleria

Building the 6-story, 340,000-square-foot, 283-unit Element Galleria Apartments near Truist Park in Atlanta faced multiple challenges including limited internet connectivity.



PARRISH CONSTRUCTION GROUP

CONSTRUCTION MANAGEMENT AT RISK

- New
- Parrish Construction Group - Midtown High School

Parrish revitalized historic buildings and built a new 4-story building.



PARRISH CONSTRUCTION GROUP

CONSTRUCTION MANAGEMENT AT RISK

- New
- Parrish Construction Group - North Houston Park Phase 2

BIM modeling aided the 80,500 square-foot complex in Warner Robins.



KATIE BRICKER PHOTOGRAPHY

CONSTRUCTION MANAGEMENT AT RISK

- Renovation
- Leapley Construction - Georgia Tech Campus Services Warehouse Storage Consolidation

Leapley completed it in 24 weeks.

We shape the future of real estate **for a better world.**

jll.com/atlanta



© 2022 Jones Lang LaSalle Americas, Inc. All rights reserved.



PARRISH CONSTRUCTION GROUP

CONSTRUCTION MANAGEMENT AT RISK

- Renovation
- Parrish Construction Group - Lemon Street Grammar School

This 15,000-square-foot renovation kept the first new school built for black students in Cobb County in 1951, during segregation, useable.



PARRISH CONSTRUCTION GROUP

CONSTRUCTION MANAGEMENT AT RISK

- Renovation
- Parrish Construction Group - Barack and Michelle Obama Academy

The 85,000-square-foot, 3-building Barack and Michelle Obama Academy in southeast Atlanta was formerly D.H. Stanton Elementary School.



NIKKI NAMA

DESIGN-BID-BUILD

- Interior Buildout
- Leapley Construction - Voya Financial

Leapley Construction was hired to demolish and reconfigure the 40,000-square-foot fourth floor of Voya Financial's Atlanta headquarters with open workstations, conference rooms, a break room and collaboration spaces.

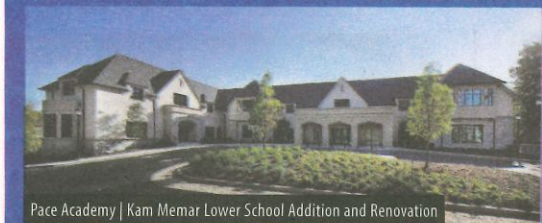


KATIE BRICKER

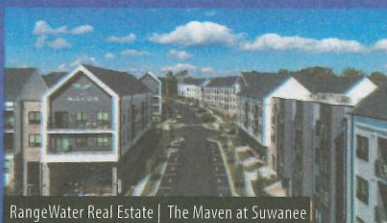
DESIGN-BID-BUILD

- Interior Buildout
- Leapley Construction - Encore at The Interlock

Leapley built out a 43,000-square-foot environment to support Encore software development and operations for Georgia Advanced Technology Ventures Inc. at The Interlock in west Midtown Atlanta.



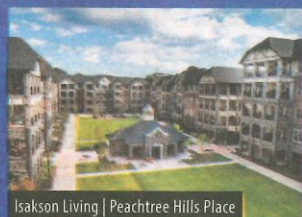
Pace Academy | Kam Memar Lower School Addition and Renovation



RangeWater Real Estate | The Maven at Suwanee



City of Newnan | Newnan Parks Project

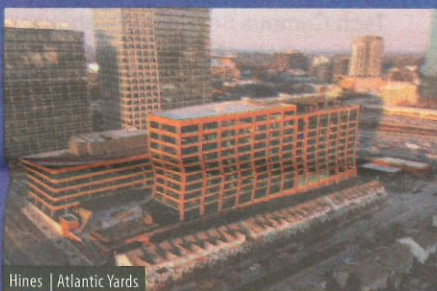


Isakson Living | Peachtree Hills Place



GMA | New Headquarters & Parking Deck

Congratulations to our AGC Build GA Award Winning Teams!



Hines | Atlantic Yards



City of Fayetteville | Fayetteville City Hall

NEW SOUTH

AVIATION • EDUCATION • GOVERNMENT • HOUSING
INDUSTRIAL • OFFICE • SPECIAL PROJECTS

newsouthconstruction.com

404.443.4000



MEJA CONSTRUCTION INC.

DESIGN-BID-BUILD

- New
- MEJA Construction Inc. - Michelle Obama STEM Elementary Academy

MEJA started the project in Hampton in late 2019, and had to overcome Covid-19 impacts on workforce and materials delivery. It secured materials early and stored them on-site. The company also had to remove a large amount of rock on the site.



MEJA CONSTRUCTION INC.

DESIGN-BID-BUILD

- Renovation
- MEJA Construction Inc. - Jonesboro High School Renovations and Additions

This project included demolition of the existing gymnasium, media center, engineering building, weight room and greenhouse, and building a new gym and Career, Technical and Agricultural Education (CTAE) building.



DUFFEY SOUTHEAST INC.

CONSTRUCTION MANAGEMENT AT RISK

- Interior Buildout
- Duffey Southeast Inc. - Toyota Material Handling

Duffey Southeast served as a design-build contractor for the mechanical, electrical and plumbing scope of a new 252,000-square-foot, tilt-up warehouse in the city of South Fulton.



COLLINS & ARNOLD CONSTRUCTION CO. LLC

CONSTRUCTION MANAGEMENT AT RISK

- New
- Collins & Arnold Construction Company LLC - 16th Street Project

The 16th Street Project in Atlanta consisted of the first 12-story Carvana vending machine and a 5-story Extra Space Storage building with one level of parking.



DUFFEY SOUTHEAST INC.

CONSTRUCTION MANAGEMENT AT RISK

- New
- Duffey Southeast Inc. - Viasat Satellite Test Facility

The 5-acre Viasat Antenna Test Facility in Duluth is used to build, test and demonstrate prototype satellite dishes.



GAY CONSTRUCTION CO.

CONSTRUCTION MANAGEMENT AT RISK

- New
- Gay Construction Co. - Kennesaw Recreation Center

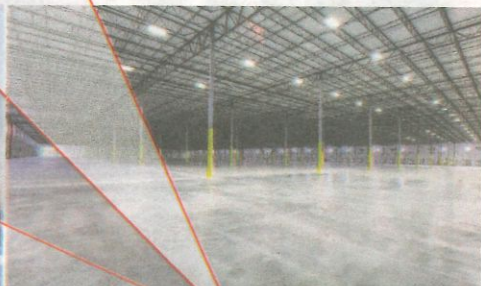
This 42,500-square-foot building includes three gymcourts with an elevated track above, and more.



www.DUFFEYSE.com

BUILDING **BEYOND** EXPECTATIONS

ATLANTA | CEDARTOWN | CHARLOTTE
JACKSONVILLE | ORLANDO | WASHINGTON DC



INDUSTRIAL || MISSION CRITICAL || RETAIL || COMMERCIAL || OFFICE



DAVID FISHER, JANDD IMAGES

CONSTRUCTION MANAGEMENT AT RISK

- New
- Hogan Construction Group LLC - AC Marriott Atlanta North

The \$21.6 million AC Marriott project in Dunwoody for Vision Hospitality Group broke ground in January 2020. The European-style hotel was to have the city's first rooftop bar.



STEVE BRACCI

CONSTRUCTION MANAGEMENT AT RISK

- Renovation
- JCI Contractors - Pelham Elementary School

An 85,000-square-foot renovation and additions to Pelham Elementary School in Pelham updated exterior design dating to the 1950s and 1990s.



MCCARTHY BUILDING COMPANIES INC.

DESIGN-BUILD

- New
- McCarthy Building Companies Inc. - Emory Johns Creek Parking Deck

The Emory Johns Creek (EJC) Parking Deck provides an additional 640 spaces for the EJC Hospital campus. The existing parking was a single surface lot. The new structure needed to complement the existing hospital.



PIEDMONT CONSTRUCTION GROUP

DESIGN-BUILD

- Renovation
- Piedmont Construction Group - University of West Georgia Production Control Room

Piedmont renovated 400 square feet on the UWG campus in Carrollton into an office and production control room that can seat nine technicians and a broadcast director.



DOUGLAS MCGUKIN

DESIGN-BID-BUILD

- New
- R.K. Redding Construction Inc. - The Birches at Villa Rica

The Birches at Villa Rica is a Tanner Health System senior living community providing assisted living and memory care for seniors.



KATIE BRICKER

CONSTRUCTION MANAGEMENT AT RISK

- New
- Lusk & Company Inc. - MainStreet Walton Mill

Lusk had 17 months to complete this 74-unit Monroe apartment complex.



TIMOTHY L. VACULA

CONSTRUCTION MANAGEMENT AT RISK

- Renovation
- Garbutt Construction Co. - Irish Gifted Academy Renovation

The former Dublin city schools' gym and band room building transformed.



TIMOTHY L. VACULA

CONSTRUCTION MANAGEMENT AT RISK

- Renovation
- Garbutt Construction Co. - Premier Surgery Center

The renovation in Brunswick included four phases with an addition.

GROUP SUBSCRIPTION

We call it **Office Pass** – it's the simple cost-effective way to grant your entire team access to local news and business intelligence.

With the majority of Americans working from home, it's more important than ever to make sure your team has the resources they count on.

The Details

- AWARD-WINNING BUSINESS NEWS & RESOURCES
- DAILY EMAIL NEWSLETTERS
- 10,000+ BUSINESS LEADER CONTACTS
- EASY ACCOUNT MANAGEMENT

Gain Access for Your Entire Team

Call Chipp Napper at 404.249.1036
or e-mail cnapper@bizjournals.com

DCC
DUBLIN CONSTRUCTION COMPANY

Dean Baldwin Paint Facility | Macon, GA | First Place | 5M / 20M Category

Nichiha Phase Two Plant Expansion | Macon, GA | First Place | 20M / 50M Category

CONGRATULATIONS TO OUR

AGC BUILD GEORGIA

AWARD WINNING PROJECT

TEAM MEMBERS!

2022
AGC
BUILD GEORGIA
AWARD
FIRST PLACE WINNERS

DUBLIN CONSTRUCTION COMPANY • 350 S WASHINGTON STREET • DUBLIN, GA • (478) 272-0721 • WWW.DCC1945.COM

ATLANTA'S 25 LARGEST INTERIOR COMMERCIAL CONTRACTORS

RANKED BY GEORGIA INTERIOR CONTRACT REVENUE

Rank	Company name Website / Prior rank	Address	2021 Georgia interior contract revenue recognized ¹	% of revenue built by base company ²	2021 Atlanta interior contract revenue	2021 companywide revenue	Partial listing of areas of specialty	Partial listing of chief Atlanta officer(s)	Year est. in Atlanta
1	Brasfield & Gorrie brasfieldgorrie.com ①	2999 Circle 75 Pkwy., Atlanta, GA 30339 678-581-6400	\$266.07 million	40%	\$212.38 million	\$4.16 billion	aerospace, commercial, education, energy, government, healthcare, hospitality, industrial, infrastructure, mission critical, senior living	Rob Taylor Keith Johnson	1984
2	HITT Contracting Inc. hitt.com ④	3200 Windy Hill Rd. S.E., #1100-E Atlanta, GA 30339 770-916-1166	\$236.01 million	0%	\$214.05 million	\$3.35 billion	corporate office, mission critical, law firms, light industrial, distribution and fulfillment centers, government, higher education, hospitality, medical office	Ed Miko Ryan Bixler Erik Kandler	1998
3	Choate Construction Co. www.choateco.com ②	8200 Roberts Dr., #600 Atlanta, GA 30350 678-892-1200	\$230.51 million	40%	\$125.74 million	\$1.19 billion	adaptive reuse, corporate, entertainment, hospitality, healthcare, institutional, industrial	Brian Bollins Wm. Millard Choate Ben Bunyard	1989
4	Leapley Construction Group leapleyconstruction.com ⑧	180 Interstate North Pkwy., #140 Atlanta, GA 30339 770-850-8711	\$204.16 million	0%	\$189.4 million	\$204.16 million	commercial interior construction of corporate, healthcare and higher education environments	Meredith Leapley Alan Scoggins	1999
5	Holder Construction holderconstruction.com ③	3300 Riverwood Pkwy., #1200 Atlanta, GA 30339 770-988-3000	\$163.02 million	3%	\$51.1 million	\$4.91 billion	data and telecom, corporate and commercial offices, aviation and transportation, higher education, adaptive reuse	Greer Gallagher Wayne Wadsworth	1960
6	Humphries and Co. LLC humphriesandcompany.com ⑦	4581 S. Cobb Dr., #200 Smyrna, GA 30080 770-434-1890	\$121.2 million	0%	\$121.2 million	\$121.2 million	corporate office interiors, clubs, law firms, media, restaurants, base building upgrades, fitness centers	Scott Moore Bobby Sharitz Paul King Kirk Thompson	1981
7	DPR Construction dpr.com ⑤	3301 Windy Ridge Pkwy., #500 Atlanta, GA 30339 404-264-0404	\$106.76 million	NA	\$70.89 million	\$7.49 billion	advanced technology, mission critical, healthcare, commercial, life sciences, higher education	Chris Bontrager	2013
8	The Conlan Co. conlancompany.com ⑥	1800 Parkway Place, #1010 Marietta, GA 30067 770-423-8000	\$71.27 million	100%	\$27.23 million	\$1.91 billion	office, warehouse, medical, manufacturing and institutional facilities	Gary Condron David Staley	1987
9	Structor Group Inc. structorgroup.com ⑪	2251 Corporate Plaza Pkwy., #200 Smyrna, GA 30080 770-226-8096	\$65 million	16%	\$65 million	\$65 million	higher education, healthcare, restaurants, specialty retail, office space	Jeff Stratton Mike Schilling Steve Hoffman	2006
10	Kinzey Construction Co. kinzeyconstruction.com ⑬	4200 Northside Pkwy., Bldg. 14, #300 Atlanta, GA 30327 404-814-6000	\$63.67 million	0%	\$63.67 million	\$63.67 million	corporate office interiors, industrial and manufacturing, base building modifications, medical, law firms, data centers	Todd Evans Brad Kinzey	1985
11	CA South LLC ca-south.com ⑫	800 Battery Ave. S.E., #420 Atlanta, GA 30339 678-302-0606	\$61.56 million	0%	\$49.82 million	\$62.2 million	general contractor specializing in occupied tenant-in-place renovations, retrofit, and new tenant build outs	Brandon Cleghorn Stacy Knight	2009
12	Turner Construction Co. turnerconstruction.com/atlanta ⑩	3495 Piedmont Rd., Bldg. 11, #700 Atlanta, GA 30305 404-504-3700	\$49.81 million	0%	\$32.49 million	\$14.7 billion	aviation, health care, commercial office, interiors, education, criminal justice, pharmaceutical, mission critical/data centers, advanced technologies	Kevin Jenkins	1976
13	Integra Construction Inc. integraconstruction.com ⑭	185 Allen Rd., #100 Atlanta, GA 30328 770-953-1200	\$47.65 million	50%	\$28.15 million	\$159.76 million	commercial interiors, medical interiors, office, retail, industrial, mission critical, multifamily	Scott Henwood Brad Horner David Blackmore	1994
14	Scott Contracting LLC scott-contracting.com ⑮	702 Old Peachtree Rd. N.W., #100 Suwanee, GA 30024 770-274-0525	\$42.54 million	0%	\$42.54 million	\$42.54 million	office, industrial, medical, retail, dental, law firms, restaurants	Mark Scott Kyle Harrison Bill Ratliff	2003
15	New South Construction Co. newsouthconstruction.com ⑯	1180 W. Peachtree St., #700 Atlanta, GA 30309 404-443-4000	\$38.92 million	90%	\$38.92 million	\$341.55 million	aviation, education, healthcare, housing, industrial, criminal justice, municipal, federal, office, private clubs, religious, sports facilities	Doug Davidson	1990
16	Hogan Construction Group LLC hoganconstructiongroup.com ⑰	5075 Avalon Ridge Pkwy., Norcross, GA 30071 770-242-8588	\$38.4 million	NA	NA	\$64.2 million	healthcare, municipal, education, faith based, interiors, adaptive reuse	Paul Hogan Adam Killen Mike Tomlin	1998
17	rand* Construction Corp. randcc.com ⑱	5565 Gelndridge Connector, #650 Atlanta, GA 30342 770-777-4177	\$36.16 million	0%	\$29.83 million	\$445 million	corporate interiors	Bryan Stolz	2009
18	Warren-Hanks Construction Co. warrenhanks.com ⑲	1736 Sands Pl. S.E., Marietta, GA 30067 770-984-0660	\$32.31 million	0%	\$32.31 million	\$32.31 million	healthcare facilities, class A office interiors, financial facilities, data centers	Gene Warren Jim Hanks	1994
19	DLP Construction Co. Inc. dlpconstruction.com ⑳	5935 Shiloh Rd. E., #100 Alpharetta, GA 30005 770-887-3573	\$30.21 million	NA	\$14.91 million	\$30.21 million	office, retail, restaurant, shopping centers, medical	Dennis Pigg Jr.	1996
20	Buildrite Construction Corp. buildriteconstruction.com ㉑	600 Chastain Rd., #326 Kennesaw, GA 30144 770-971-0787	\$22.79 million	0%	\$36,275	\$22.79 million	office and Class A interiors, retail, industrial, rental car facilities and electric charging stations, hospitality, medical, financial	Bryan Alexander	1982
21	Cornerstone Contracting Group Inc. builtbyccg.com ㉒	889 Franklin Gateway, Suite 180 Marietta, GA 30067 770-575-2642	\$21.79 million	0%	\$21.79 million	\$21.79 million	tenant improvements, adaptive re-use, spec office	Jeremy Tran Josh Faglier Joe Corona	2014
22	Balfour Beatty US balfourbeattyus.com ㉓	300 Galleria Pkwy., #2050 Atlanta, GA 30339 678-921-6800	\$21.5 million	NA	\$21.5 million	\$4.6 billion	education, government, retail, hospitality, corporate office, health care, multifamily housing, civil infrastructure	Michael Macon	2001
23	Cox & Co. LLC cox-co.com ㉔	2727 Paces Ferry Rd. S.E., Bldg. 1, #275 Atlanta, GA 30339 404-418-9480	\$20.35 million	0%	\$20.35 million	\$20.35 million	corporate class-A office spaces, healthcare and laboratory facilities, industrial, education, research, mission critical	Thomas White Chris Graeff Greg Cox	2018
24	Trident Construction Group tridentconstructiongroup.com ㉕	8215 Roswell Rd., Bldg. 100 Atlanta, GA 30350 770-680-5110	\$18.62 million	1%	\$12.22 million	\$25.37 million	medial, office, hospitality, multifamily	Bert van der Meer Jay Wicklund	2012
25	Swinerton Builders Inc. swinerton.com ㉖	5901 Peachtree-Dunwoody Rd., #B-300 Atlanta, GA 30328 404-252-3142	\$17.2 million	0%	\$17 million	\$4.7 billion	commercial interiors, office, multifamily, industrial, aviation, hospitality	Derek Mosiman	2018

¹ Revenue recognized for work performed by the Georgia office(s), regardless of where the project was located. Figures do not include any base building revenue.

² Percentage of Georgia interior contract revenue recognized for a 100 percent single-tenant occupant, in a building built by the company's base building company.

NA - Not available or not applicable

SOURCES: Atlanta Business Chronicle research and the companies

It is not the intent of this list to endorse the participants or to imply that the size of a company indicates its quality. All information listed is based on responses from the companies to Atlanta Business Chronicle surveys. Please send corrections or additions to Patsy Conn at pconn@bizjournals.com.



GARBUTT CONSTRUCTION CO.

CONSTRUCTION MANAGEMENT AT RISK

- Renovation
 - Garbutt Construction Co. - Midway Hills Academy, Midway Hills Primary School & Lakeview Primary School
- In the \$12 million project, Garbutt updated and improved nearly every corner of Midway Hills Academy and Primary School in Milledgeville.



ALBION GENERAL CONTRACTORS INC.

DESIGN-BUILD

- New
 - Albion General Contractors Inc. - Fulton County Hapeville Library
- Albion's work on the 5,673-square-foot library project involved developing a staging system, adding a new mid-sized parking lot and climate-controlled storage, as well as moving, storing and reinstalling existing library collections.



DUBLIN CONSTRUCTION COMPANY INC.

DESIGN-BUILD

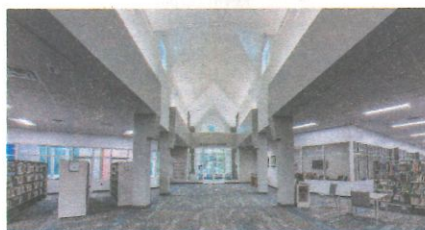
- New
 - Dublin Construction Company Inc. - Dean Baldwin Painting Facility
- Dean Baldwin Painting needed the nearly 130,000-square-foot facility located at Middle Georgia Regional Airport in Macon for its work painting aircraft from large 767 airplanes to small private jets.



DUBLIN CONSTRUCTION COMPANY INC.

DESIGN-BUILD

- New
 - Dublin Construction Company Inc. - Nichiha USA Phase Two Plant Expansion
- The Nichiha Phase Two Plant Expansion project in Macon was approximately 473,000 square feet comprised of eight different buildings and multiple ancillary silo/equipment foundations.



ALBION GENERAL CONTRACTORS INC.

DESIGN-BUILD

- Renovation
 - Albion General Contractors Inc. - Cobb County Switzer Library
- This interior renovation and exterior addition in Marietta added new features to the 30-year-old library, including two maker spaces for adults and teens, a dedicated teen space and a family computer lab.



JOHN QUEST

DESIGN-BID-BUILD

- Interior Buildout
 - Cork Howard Construction - Wellstar South Cobb Primary Care
- This project included the complete renovation of an existing medical practice in Austell, removing existing improvements and taking much of the space down to the "bare bones," all on an accelerated schedule.



COX & CO.

DESIGN-BID-BUILD

- Interior Buildout
 - Cox & Co. - CP Kelco Project Tesla
- The CP Kelco Global Innovation Center project in Atlanta transformed more than 24,000 square feet of class-A office space into a laboratory with labs devoted to microbiology, fermentation sciences, R&D, and consumer and industrial development.



COOPER & COMPANY GENERAL CONTRACTORS INC.

DESIGN-BID-BUILD

- New
 - Cooper & Company General Contractors Inc. - Gwinnett County Public Library - Norcross Branch
- The 22,000-square-foot, LEED certified library, with exterior of brick and aluminum wall panels, was built over a concrete parking deck. Large windows offer views of Lillian Webb Park.



KEVIN PRICE CONSTRUCTION

DESIGN-BID-BUILD

- New
 - Kevin Price Construction - Berkmar High School
- This project in Lilburn included a 44,000-square-foot performing arts center addition and a multi-summer renovation of the existing mechanical room, arts building and theatre totaling 19,000 square feet.



CSRA PHOTOGRAPHY

DESIGN-BID-BUILD

- New
 - McKnight Construction Co. - Columbia County Performing Arts Center
- McKnight's work on the 85,000-square-foot facility in Evans required heightened attention to the extraordinarily specialized specifications to achieve success.

MAYBERRY ELECTRIC, INC.

EMERGENCY 24/7 HOTLINE 404-645-7373

404-799-3334

www.mayberryelectric.com

2019 and 2020 NECA Project Excellence Award Winner

- Engineering & Consulting
- Service & Preventative Maintenance
- Construction & Tenant Build-Outs

CONGRATULATIONS 16TH STREET PROJECT TEAM

COLLINS AND ARNOLD CONSTRUCTION COMPANY, LLC

ATLANTA'S 25 LARGEST COMMERCIAL CONTRACTORS

RANKED BY GEORGIA CONTRACT REVENUE

Company name Website / Prior rank	Address	2021 Georgia contract revenue recognized ¹	2021 Atlanta contract revenue recognized ²	2021 companywide revenues recognized	Partial listing of areas of specialty	Partial listing of chief Atlanta officer(s)	Year est. in Atlanta
1 Holder Construction holderconstruction.com ①	3300 Riverwood Pkwy., #1200 Atlanta, GA 30339 770-988-3000	\$4.91 billion	\$772.89 million	\$4.91 billion	data and telecom, corporate and commercial offices, aviation and transportation, higher education, interiors and adaptive reuse	Wayne Wadsworth Greer Gallagher	1960
2 Brasfield & Gorrie brasfieldgorrie.com ③	2999 Circle 75 Pkwy., Atlanta, GA 30339 678-581-6400	\$1.48 billion	\$1.26 billion	\$4.16 billion	aerospace, commercial, education, energy, government, healthcare, hospitality, industrial, infrastructure, mission critical, multifamily, senior living	Rob Taylor Keith Johnson	1984
3 Turner Construction Co. turnerconstruction.com/atlanta ②	3495 Piedmont Rd., Bldg. 11, #700 Atlanta, GA 30305 404-504-3700	\$1.3 billion	\$205.89 million	\$14.7 billion	commercial office, healthcare, aviation, global mission critical/data center, advanced technologies, industrial, higher education, government, hospitality	Kevin Jenkins	1976
4 The Conlan Co. conlancompany.com ④	1800 Parkway Place, #1010 Marietta, GA 30067 770-423-8000	\$1.23 billion	\$349.37 million	\$1.91 billion	light industrial distribution, manufacturing, office	Gary Condron David Staley Kevin Turpin	1987
5 Evans General Contractors LLC evansgeneralcontractors.com ⑥	3050 Northwinds Pkwy., #200 Alpharetta, GA 30009 678-713-7616	\$920 million	\$412 million	\$1.18 billion	manufacturing, life sciences, office, food and beverage, healthcare, distribution and logistics	Ronnie Cupp Jesse Bentley Chris Hilgeman R.T. Evans	2001
6 Carroll Daniel Construction Co. carrolldaniel.com ⑧	330 Main St., Gainesville, GA 30501 770-536-3241	\$412.98 million	\$377.87 million	\$413.35 million	K-12, industrial, transportation, warehouse, healthcare, higher education	C. Brian Daniel	1946
7 Choate Construction Co. choateco.com ⑦	8200 Roberts Dr., #600 Atlanta, GA 30350 678-892-1200	\$373.69 million	\$285.79 million	\$1.19 billion	corporate, industrial, entertainment, hospitality, senior living, healthcare, student housing	Wm. Millard Choate Ben Bunyard Brian Bollins	1989
8 JE Dunn Construction Co. jedunn.com ⑤	2555 Cumberland Pkwy., Atlanta, GA 30339 770-551-8883	\$365.4 million	\$506.82 million	\$4.92 billion	K-12, higher education, data center, healthcare, aviation, multifamily, mixed-use, office, warehouse, industrial	Mike Bartlett	1985
9 New South Construction Co. newsouthconstruction.com ⑨	1180 W. Peachtree St., #700 Atlanta, GA 30309 404-443-4000	\$346.9 million	\$241.71 million	\$346.9 million	aviation, education, healthcare, housing, industrial, criminal justice, municipal, federal, office, private clubs, religious, sports facilities	Douglas Davidson	1990
10 Batson-Cook Construction batson-cook.com ⑪	2859 Paces Ferry Rd. S.E., #200 Atlanta, GA 30339 770-955-1951	\$314.98 million	\$301.76 million	\$672.65 million	healthcare, senior care, multifamily, office, hospitality, commercial, industrial	R. Randall Hall	1959
11 HITT Contracting Inc. hitt.com ⑭	3200 Windy Hill Rd. S.E., #1100-E Atlanta, GA 30339 770-916-1166	\$272.52 million	\$226.23 million	\$3.35 billion	corporate office, mission critical, law firms, light industrial, distribution and fulfillment centers, government, higher education, hospitality, medical office, building repositioning	Ed Miko Ryan Bixler Erik Kandler	1998
12 Parrish Construction Group Inc. parrishconstruction.com ⑮	2300 Lakeview Pkwy., #200 Alpharetta, GA 30009 478-987-5544	\$246.46 million	\$66.77 million	\$246.46 million	education, industrial, healthcare	Dave Cyr Charlie Griffis Sara Murph	2010
13 Fortune-Johnson LLC fortune-johnson.com ⑬	3740 Davinci Ct., #220 Peachtree Corners, GA 30092 770-458-5899	\$245.88 million	\$245.88 million	\$245.88 million	general contracting and construction management services	Jason McIlvain Karen White Brett Fortune	1991
14 DPR Construction dpr.com ⑯	3301 Windy Ridge Pkwy., #500 Atlanta, GA 30339 404-264-0404	\$236.3 million	\$143.6 million	\$7.1 billion	higher education, advanced technology, commercial, healthcare, life sciences	Chris Bontrager	2013
15 Gilbane Building Co. gilbaneco.com ⑫	3550 Peachtree Rd., #1200 Atlanta, GA 30326 678-282-1300	\$209.59 million	\$127.36 million	\$6.2 billion	commercial office, corporate, higher education, K-12, sports, healthcare, multifamily	Brian Steed	1998
16 Archer Western Construction walshgroup.com ⑭	2410 Paces Ferry Rd., #1200 Atlanta, GA 30339 404-495-8700	\$205.69 million	\$192.63 million	\$5.27 billion	multifamily, hospitality, healthcare, office, waste water treatment plants, water treatment plants, highway, bridge, rail	David Casey	1983
17 Leapley Construction Group leapleyconstruction.com ⑰	180 Interstate North Pkwy., #140 Atlanta, GA 30339 770-850-8711	\$204.16 million	\$189.4 million	\$204.16 million	commercial interior construction of corporate, healthcare, higher education environments	Meredith Leapley Alan Scoggins	1999
18 W.H. Bass Inc. whbass.com ⑱	11300 Johns Creek Pkwy., #100 Johns Creek, GA 30097 770-662-8430	\$176.99 million	\$48.84 million	\$176.99 million	restaurant, petroleum, financial, grocery	Carl Herndon Marty Robinson David Carr Dave Lee	1984
19 FCL Builders fclbuilders.com ⑲	1755 North Brown Rd., #175 Lawrenceville, GA 30043 470-514-2705	\$176.73 million	\$124.88 million	\$1.32 billion	industrial, warehouse, distribution, e-commerce, cold storage and food processing, manufacturing	Eddie Slay	2015
20 Hogan Construction Group LLC hoganconstructiongroup.com ⑳	5075 Avalon Ridge Pkwy., Norcross, GA 30071 770-242-8588	\$176.3 million	NA	\$253.4 million	hospitality, healthcare, municipal, education, faith- based, interiors, adaptive reuse, industrial	Paul Hogan Adam Killen Mike Tomlin	1998
21 Balfour Beatty US balfourbeattyus.com ㉔	300 Galleria Pkwy., #2050 Atlanta, GA 30339 678-921-6800	\$166.54 million	\$146.92 million	\$4.6 billion	hospitality, K-12, multifamily, local/state government, mixed-use, interiors, civil infrastructure	Michael Macon	2001
22 Integra Construction Inc. integraconstruction.com ㉕	185 Allen Rd., #100 Atlanta, GA 30328 770-953-1200	\$159.76 million	\$68.98 million	\$159.76 million	office, interiors, warehouse, manufacturing, multifamily, healthcare, mission critical, retail and sports facilities	David Blackmore Scott Henwood Brad Horner	1994
23 Kajima Building and Design Group Inc. www.kbd.group ㉖	3490 Piedmont Rd. N.E., #900 Atlanta, GA 30305 404-812-8600	\$141.49 million	\$62.7 million	\$555.32 million	manufacturing, warehouse, interiors	Jeff Stiner	1964
24 McCarthy Building Companies Inc. www.mccarthy.com ㉗	2727 Paces Ferry Rd. S.E., Bldg. 2, #1600 Atlanta, GA 30339 770-980-8183	\$137.83 million	NA	NA	healthcare, education, aviation, solar	Bobby Campbell	2005
25 Skanska USA Building Inc. usa.skanska.com ㉘	245 Peachtree Center Ave., #2500 Atlanta, GA 30303 404-946-7400	\$128.07 million	\$128.07 million	\$4.2 billion	commercial office, healthcare, education, aviation, industrial, sports, data centers	Scott Cannon	1905

¹ Revenue recognized for work performed by the Georgia office(s), regardless of where the project was located.² Projects in the 20-county metropolitan Atlanta area only.

NA - Not available or not applicable

SOURCES: Atlanta Business Chronicle research and the companies

It is not the intent of this list to endorse the participants or to imply that the size of a company indicates its quality. All information listed is based on responses from the companies to Atlanta Business Chronicle surveys. Please send corrections or additions to Patsy Conn at pconn@bizjournals.com.



SAVANNAH COLLEGE OF ART & DESIGN

DESIGN-BID-BUILD

- Renovation
- West Construction Co. - Savannah College of Art & Design School of Entertainment Arts

The SCAD School of Entertainment Arts involved renovating 30,000 square feet from a 1950s concrete masonry unit block warehouse into a film studio and educational building.



BARNSELY CONSTRUCTION GROUP

CONSTRUCTION MANAGEMENT AT RISK

- Interior Buildout
- Barnsley Construction Group - Inspire Brands Innovation Center

Barnsley's team used ground-installed custom HVAC units, wing walls around the cook lines and air ducts to provide Inspire Brands with the large cook lines it desired for brand testing.



LUSK & COMPANY INC.

CONSTRUCTION MANAGEMENT AT RISK

- New
- Lusk & Company Inc. - Home2 Suites

Lusk completed its first multi-story hotel in East Point after taking over a project for a previous client, identifying and correcting defects; and putting together a working budget; and meeting Hilton hotel standards.



MCKNIGHT CONSTRUCTION CO.

CONSTRUCTION MANAGEMENT AT RISK

- New
- McKnight Construction Co. - Millhouse Station Apartment Building

McKnight overcame safety concerns, site remediation problems, and other issues causing delays to complete the 157,000-square-foot apartment community in downtown Augusta.



LUSK AND COMPANY INC.

CONSTRUCTION MANAGEMENT AT RISK

- Renovation
- Lusk and Company Inc. - Edgewood Center II

Lusk renovated a 22,649-square-foot, early 1900s building and built a two-story addition over an adjacent, operating restaurant to create 50 housing units in Downtown Atlanta.

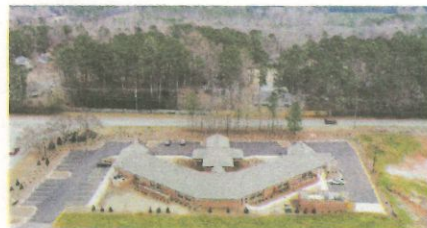


KIP RAMSEY

DESIGN-BUILD

- New
- Barnsley Construction Group - Newton County Law Enforcement Center

Barnsley solved potential problems for the project in Covington at the bid phase by presenting an alternative design plan that was accepted. It overcame logistical challenges.



TOMCO CONSTRUCTION INC.

DESIGN-BUILD

- New
- Tomco Construction Inc. - Sacred Journey Hospice

Tomco built a uniquely shaped, wood-frame building with a masonry veneer exterior, designed with many exterior windows, using value engineering to overcome material pricing uncertainties and remain on budget.



AERIAL INNOVATIONS SOUTHEAST

DESIGN-BID-BUILD

- Interior Buildout
- Barnsley Construction Group - Delta Air Lines Express Lobby

To build out the interior of the Delta Air Lines Express lobby in Atlanta, Barnsley used collaboration and coordination to solve an issue with the existing HVAC system and create a ceiling system that met the client needs and fit the space.



STAFFORD BUILDERS & CONSULTANTS INC.

DESIGN-BID-BUILD

- New
- Stafford Builders & Consultants Inc. - Tindall Fields III

Rising material costs and supply chain issues were the chief challenges for Stafford on this affordable housing project in Macon. Ordering lumber at the beginning forestalled an 80% increase in its cost.



AERIAL INNOVATIONS SOUTHEAST

DESIGN-BID-BUILD

- Renovation
- Central Plant Builders - Concourse E Central Utility Plant Enhancements Project

Central Plant Builders, a joint venture of Barnsley Construction Group, F&S Mechanical and Plumbing and Uptime Electric, renovated the plant on the Atlanta airport's largest concourse.



THE PINYAN CO.

DESIGN-BUILD

- Renovation
- The Pinyan Co. - St. Vincent's Academy

The two-phase renovation of the third floor of the 175-year-old former Sisters of Mercy convent building at the corner of Albercorn and Liberty streets in Savannah included converting space to education and administrative uses.



JTVS BUILDERS INC.

DESIGN-BID-BUILD

- Renovation
- JTVS Builders Inc. - Georgia Historical Society Research Center

The project involved interior restoration of historic Hodgson Hall, built in 1876, which is GHS's research center containing millions of rare documents, and the addition of a new archival wing that nearly doubled the archival space.



SPORTS TURF CO.

ATHLETIC FIELDS

- \$1 million - \$4,999,999
- Sports Turf Co. - Villa Rica High School's Sam McIntyre Stadium

Sam McIntyre Stadium at Villa Rica High School's artificial turf system is one of the safest and most durable surfaces for athletes.



PRECISION CONCRETE CONSTRUCTION INC.

CONCRETE

- \$10 million - \$14,999,999
- Precision Concrete Construction Inc. - 640 Peachtree Hotel

The 14-story Courtyard Marriott and Element by Westin hotels in Midtown Atlanta used formwork wall panels for the elevator and stair shear walls.



PRECISION CONCRETE CONSTRUCTION INC.

CONCRETE

- \$5 million to \$9,999,999
- Precision Concrete Construction Inc. - Savannah Arena

Precision Concrete began construction in March 2020 for AECOM/Hunt Construction on the 9,500-seat Savannah Arena.



MAYBERRY ELECTRIC INC.

ELECTRICAL

- \$1 million - \$4,999,999
- Mayberry Electric Inc. - JLL Atlanta Headquarters

This project encompassed a four-floor, 52,000-square-foot renovation in Buckhead that was completed in June of 2021.



MAREK

FINISHES/PAINTING

- \$15 million and over
- Marek - Confidential client

In December 2021, Marek crews completed work on an office buildout for one of the world's largest tech companies in a 16-floor, 500,000-square-foot space designed by Gensler and led by general contractor Leapley Construction.



HARRISON CONTRACTING CO.

FINISHES/PAINTING

- Under \$1 million
- Harrison Contracting Co. Inc. - Colony Square

Harrison Contracting was engaged by Hoar Construction to join the transformation of the Southeast's first mixed-use development, the 50-year-old Colony Square in Midtown. The project spanned four years.



RICK HOLLIDAY

FIREPROOFING

- \$1 million - \$4,999,999
- Adams Construction Services Inc. - TK Elevator Test Tower and IQC

Adams Construction's application of intumescent fireproofing for the TK Elevator Test Tower and IQC project in Cobb County was unique due to the size and the lack of access to the steel framing requiring coating.



MCKENNEY'S INC.

MECHANICAL

- \$15 million and over
- McKenney's Inc. - Emory Musculoskeletal Institute

McKenney's installed mechanical and plumbing services in the new main office building and the 800-spot parking deck. Emory prioritized achieving LEED certification. The design tried to optimize energy usage.



GALERIE LIVING

MECHANICAL

- \$5 million to \$9,999,999
- Reliance Interiors Inc. - Village Park @ Paces/Corso Atlanta

Reliance used BIM modeling to coordinate, design and fabricate complex soffits and features for this senior living community off-site.

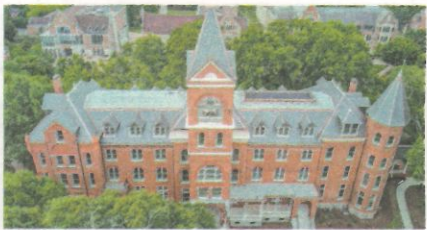


MCKENNEY'S INC.

MECHANICAL

- \$1 million - \$4,999,999
- McKenney's Inc. - Vero Biotech

Vero Biotech develops technologies for inhaled nitric oxide delivery in acute care hospitals and elsewhere. It was adding 3,000 square feet of production space in Atlanta.



L.E. SCHWARTZ & SON INC.

ROOFING

- \$1 million - \$4,999,999
- L.E. Schwartz & Son Inc. - Agnes Scott College - Main Hall

L.E. Schwartz & Son was tasked by Holder Construction to replace the roofs on the 1889 Main Hall building of Agnes Scott College in Decatur. This project included the replacement of the entire slate roofing system.



BRENT SCARBROUGH & CO.

SITEWORK

- \$10 million - \$14,999,999
- Brent Scarbrough & Co. - The Interlock

The project involved existing contaminated soils, deep excavations and mass amounts of rock on the 9-acre site of this mixed-use development in Atlanta. GPS equipment located excavation areas.



ATLANTA
BUSINESS CHRONICLE

BizSpotlight

Our multi-channel press release
NOW SUPPORTS VIDEO!

BizSpotlight provides your company exposure to a targeted audience of local Business Journal readers — executives and decision makers like yourself. With guaranteed promotion in both print and online, our multi-channel press release increases your brand awareness and improves search engine visibility.

NEW! FEATURED LISTINGS



BRENT SCARBROUGH & CO.

SITEWORK

- \$5 million - \$9,999,999
- Brent Scarbrough & Co. - Peachtree Hills Place

Site work for this Atlanta retirement community, which started in November 2017, included removing 50,000 yards of unsuitable soil and installing three corrugated metal underground detention ponds.



BRENT SCARBROUGH & CO.

SITEWORK

- \$1 million - \$4,999,999
- Brent Scarbrough & Co. - Amazon Hub

This project in Doraville for Choate Construction included demolishing building pads, an existing parking lot and an old water line; excavating 22,000 yards of dirt; and installing a custom stormwater detention system.



INCREASE INTERACTION WITH VIDEO



EXPANDED PRINT PROFILE WITH PHOTO & 1,000 CHARACTERS



PROMINENT EXPOSURE ONLINE AND IN EMAIL

INVEST IN YOUR COMPANY WITH BIZSPOTLIGHT

LEARN MORE AT: atlantabusinesschronicle.com/bizspotlight

OR CONTACT: CHIPP NAPPER | CNAPPER@BIJJOURNALS.COM | 404.249.1036

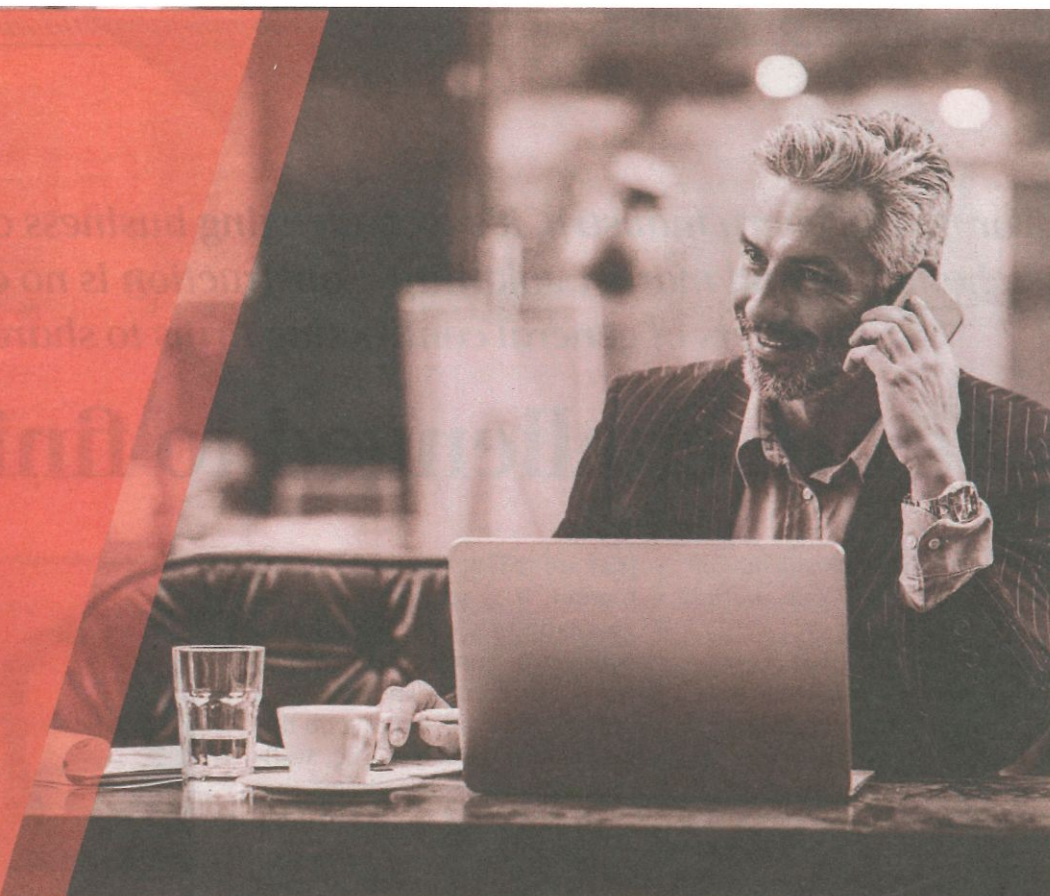


GETTY IMAGES

BOOK OF **LISTS**

We'll give you something to talk about

Get rankings and contact information from the area's most influential companies.



SELECT FROM THREE FORMATS



PRINT EDITION

Bound Hard Copy



**DIGITAL DATA
DOWNLOAD**

One-time download



UNLIMITED

Unlimited CSV Downloads

WHAT IS THE LIST?

The data is collected and compiled by full time researchers in our newsrooms. The data offers a deep look at our business rankings and other organizations derived from original and often exclusive data one can only find with The Business Journals.

WHERE DOES THE DATA COME FROM?

Information is generally gathered through direct outreach with businesses and organizations in our markets or by analyzing public records and other public data sources.

Find your solution at
bookoflists.com or call **1-800-486-3289**

HEAR WHAT YOUR PEERS HAVE TO SAY

“

The Book of Lists is an essential tool for growing my knowledge and understanding of the business community ...

GRETCHEN MCHALE-AREGOOD
DIRECTOR OF SALES | THE MET PHILADELPHIA | LIVE NATION

... a great resource that I continue to rely on each year for market research, providing insightful, summarized information on businesses, decision makers and industry leaders ...

RUSSELL GOLDBERG
CPA, CITP, PARTNER | WITHIUM

... helpful for prospecting — for supporters, volunteers and potential students.

STEPHANIE STENGLEIN
ASSOCIATE EXECUTIVE DIRECTOR | ARTS+

”

For nearly every industry, it's a challenging business climate, from supply chain shortages to labor challenges and market volatility. Construction is no exception. Atlanta Business Chronicle asked leaders of general contracting firms to share what's keeping them up at night.

'We are challenged to finish projects'

Jennifer Horton, president, Collins and Arnold Construction Company LLC:

"These are in no particular order and might change depending on the night!

Building a pipeline of profitable work: We are challenged to finish projects started a year or more ago with rising costs and undependable material deliveries. While much of the costs were secured at the time, there are always general conditions like rental equipment, fuel, travel and living expenses

that are still at the mercy of the market. It is making our margins extremely thin. The solution is to get the projects finished so those costs end. The reality is most of them are waiting on finish materials such as tile, wall-covering or specialty items that are caught up in the supply chain.

Building a pipeline of good people: The construction industry was already challenged with a workforce shortage before the pandemic. The last two years did not move us forward. As a company, we have been work-



Jennifer Horton is president of Collins and Arnold Construction Company LLC.

ing diligently for the past seven years to bring in the next generation of leaders. We have been working with local high schools and post-secondary schools to promote our industry as a viable place to grow a career whether you have a high school education or a post-secondary degree. We don't have any subcontractors who work for us that are not challenged to fill positions, be it electricians, plumbers, masons, carpenters. They are all desperate for people. We have made some meaningful progress but I see this as

an investment of time that will need to be built into the fabric of our business just like quality service to our clients. It is a delicate balance – if we don't have good people to execute the work, we are limited as to the amount of work we can take on.

An unstable economy: If we are honest, this is keeping all of us up at night, not just those of us in the construction industry. It affects us professionally and personally, which means you can't leave this worry at the office."

"The construction industry was already challenged with a workforce shortage before the pandemic. The last two years did not move us forward."

JENNIFER HORTON, president, Collins and Arnold Construction Company LLC

The pressure to hire is 'extremely strong'

Brian Newsome, CEO, Albion:

"I will tell you that the number-one concern – and I'm sure I echo what any leader in the construction industry would say right now – we're all kept up at night for the increased pressure to hire. The demand is extremely strong for construction, and we just do not have a workforce that right now is at the volume that we need to continue to grow. So all night I think about people I'm talking to, interviewing, recruiting and how we're going to engage and bring on more qualified people. There's lots of folks out there that would respond to offers. But I'm looking for people who can make a contribution right away, who I can hand a project to right now and get going.

Right now I can hire a handful of project managers, a handful of superintendents and a handful of staff. That is the number-one thing that's keeping me up at night.

Workforce development is really what the AGC has been harping on for a decade and we're starting to see the fruits of that. It's just about five years behind where I would like it to be. There's some work to be done there, certainly. But we're moving in that direction.

I think for the first time in our company's history, we're almost 20 years old now, we're at a point now where we might find ourselves saying, 'Oh, no, we can't take on that project.' And that's unusual.

The other thing is really the dif-



Brian Newsome is CEO at Albion.

ferent side of the same coin: not only are we trying to attract, we're trying to retain.

If you take a macro view of our industry, what's happening right now is we're just robbing from each other. There's not enough folks that we can attract in, so we're just kind of pulling from each other.

You know, if you hear the cries of a hyena in the forest, the lions all come running. That's kind of a good analogy for, if we think that there's a weak construction company out there that is struggling, we're all racing to that cry and we're trying to recruit those people in as fast as we can.

If I hire a guy, I'm trying to look for, well, who else is in that company that I can hire as well? Let's pull them all in. So that means

retention is extremely important.

Retention rates are number-one how we measure ourselves and that is really what drives our culture as an organization. The executive team spends an inordinate amount of time talking about culture and how do we preserve our culture and how do we grow our culture. And what are we doing to make people feel appreciated? And what are we doing to encourage them to stay?

My third one is really differentiation in the market and making sure that our clients are getting serviced at a level that they've not experienced before so when that next project comes up, there's never a doubt of who they're going to call."

"The demand is extremely strong for construction, and we just do not have a workforce that right now is at the volume that we need to continue to grow."

BRIAN NEWSOME, CEO, Albion

GREEN BUILDING

Developer sees sustainable concrete as future

Injecting carbon dioxide strengthens the final material

BY TYLER WILKINS
twilkins@bizjournals.com

While at a happy hour, MDH Partners CEO Jeff Small learned about the ability to create a more sustainable form of concrete by mixing it with a well-known pollutant.

The technology works by injecting carbon dioxide – a primary greenhouse gas that exacerbates climate change – into the concrete. The process permanently traps the chemical compound and converts it into a mineral, which simultaneously strengthens the final material.

The casual conversation set Small to lead MDH Partners into becoming the first industrial developer to implement the technology. The firm has delivered Nashville and Charlotte facilities with the special concrete, which producers create with hardware from CarbonCure Technologies.



MDH PARTNERS

Amazon.com Inc. (Nasdaq: AMZN), an investor in the company, now pours the special concrete into some of its newest facilities. In Atlanta, New City Properties used the concrete in its 725 Ponce project. CarbonCure estimates it has saved more than 166,000 metric tons of carbon dioxide emissions.

Now, the Atlanta-based firm is incorporating the concrete into a project closer to home. It broke ground on Busch Commerce Center, a 1.2 million-

square-foot industrial park in the Cartersville area. It's projected to be one of the largest developments with the material.

The firm estimates that the concrete at its Cartersville project will save 425 metric tons of carbon dioxide. That's equivalent to the emissions produced by driving more than 1 million miles in a gas-powered car.

"We think it's the right thing to do," said MDH Partners CFO Arun Singh,

MDH Partners' Busch Commerce Center will be built with concrete injected with carbon dioxide.

adding the special concrete comes without additional costs.

Companies face mounting pressure from consumers, scientists and politicians to reduce their carbon footprints. The concrete could be a major selling point to Fortune 100 companies exploring ways to mitigate environmental impacts, Singh said.

Singh expects the concrete to "snowball" in coming years as developers more regularly work it into their environment, social and governance policies.

Busch Commerce Center, located to the south of Cassville-Cartersville Road, is expected to be completed by January 2023. It's two miles from Interstate 75 and a one-hour drive to the Appalachian Regional Port.

Besides the concrete, it will be built with low-maintenance and native landscaping, drip irrigation for water efficiency and materials with low volatile organic compounds.

WORKFORCE DEVELOPMENT

Construction industry reaches out to veterans

People exiting military service are a potential labor pool for contractors.

Help-wanted signs are everywhere, but for the construction industry the signs are blinking red.

The construction industry needs to attract nearly 650,000 additional workers on top of the normal pace of hiring in 2022 to meet the demand for labor, according to the Associated Builders and Contractors.

And the industry is facing an aging workforce. The number of construction workers ages 25-54 fell 8% over the past decade, while older workers exited the workforce in the pandemic. More than 20% of the workforce is older than 55.

"The need is huge," says Josh Vallimont, a project executive with DPR Construction in North Carolina. "Everybody talks now about materials not being readily available. But I'm going to run into a work stoppage without the right people on the team faster than I will



GRANT BALDWIN PHOTOGRAPHY

related to material availability. There's always another material. But finding the right person that has the desire to show up and go to work? Those folks are becoming harder to find today."

To fill the need, DPR and others are turning to veterans departing from military service as a potential labor pool.

Erik Cannon retired as an Army engineer sergeant major in August 2021, hav-

ing worked as a construction engineer at Fort Bragg. Through connections with Charlotte's Veterans Bridge Home, Cannon met Vallimont. The contact resulted in a job for Cannon as a project manager in DPR's Raleigh office.

Cannon, who managed construction projects for the federal government, says the leadership skills he learned in the Army translate to commercial

Army veteran Bruce Worcester (right), general superintendent, and Navy veteran Scott Semder, foreman, both with DPR Construction, on a construction site within Camp North End in Charlotte, N.C.

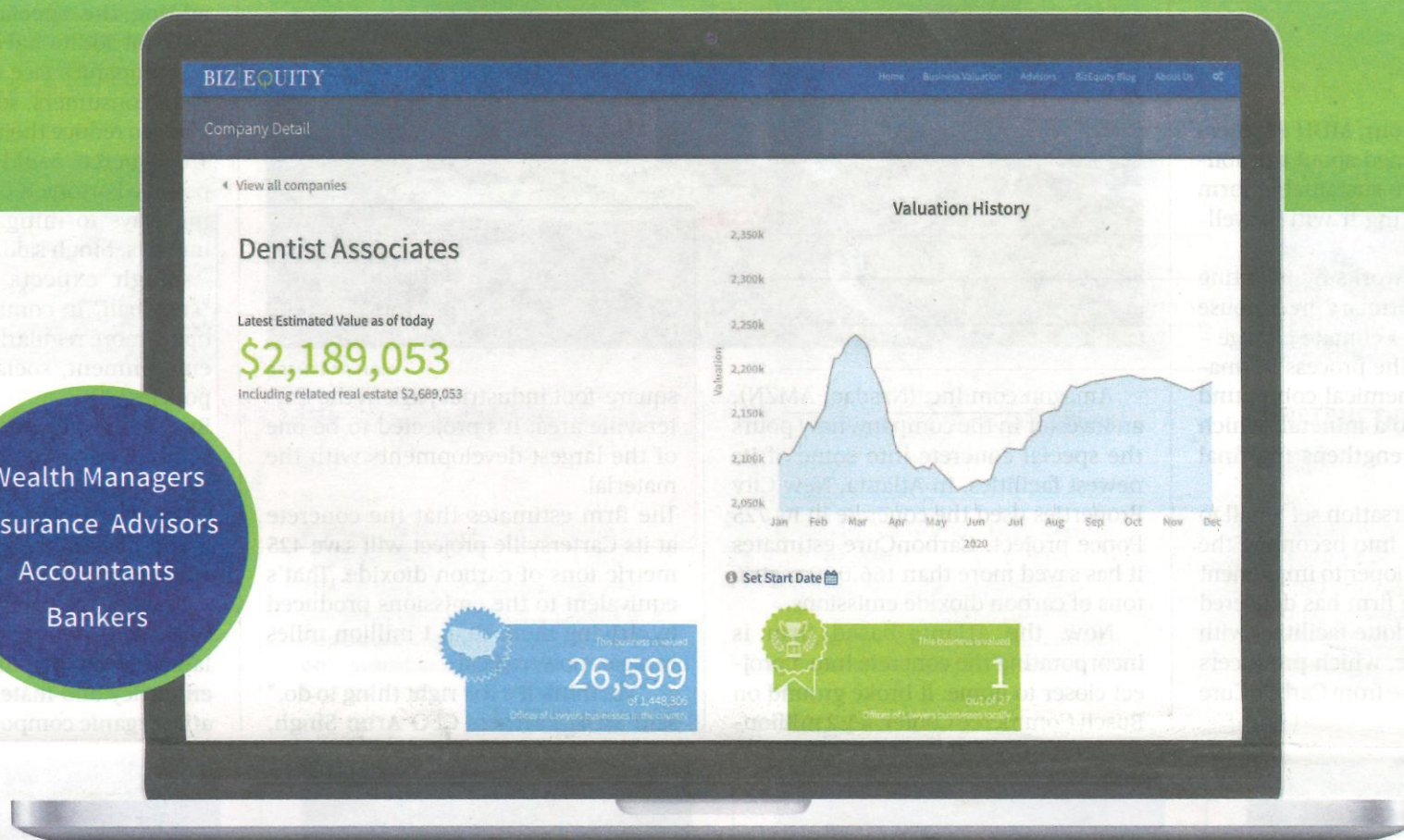
construction. He identifies the individual strengths and weaknesses of those on his team and puts the right combination together to execute a plan.

"You get a lot of that in the military because everyone comes with a different background, and you have to figure out what works," he says.

Yet for many hiring managers, deciphering military resumes is often a stumbling block to hiring a veteran into a civilian job. Robyn Grable aims to overcome that obstacle with Veterans Ascend, an artificial intelligence-enabled talent-sourcing platform that matches skills associated with military job descriptions to civilian jobs.

"It takes the translation off the table," says Grable, founder and CEO.

Financial Advisors, Seize Today's \$13.2 Trillion Opportunity...



Over **\$13.2 trillion** in business-owner wealth is set to transfer over the next decade.

How are you preparing your clients?

Providing sound, comprehensive financial advice begins with helping clients understand their business's value. **Get there faster and more efficiently with BizEquity's valuation software.**

- **Run on-the-spot business valuations** in 30 minutes
- **Attract and engage** new business owner clients
- **Generate actionable business insights** and industry-specific KPIs
- **Track valuation history** and financial performance

► **To Schedule a Demo, Scan QR Code**
or visit bizequity.com/advisoroffice



BIZ|EQUITY®
An ACBJ Company