

BUILD GEORGIA AWARDS

In this special section, Atlanta Business Chronicle features the first-place winners of the Associated General Contractors of Georgia's Build Georgia Awards.

The competition is open to AGC Georgia members. Winning projects represent construction excellence by both general contractors and specialty contractors. Submitted projects must be on Georgia soil and must have been completed during the calendar year 2016. projects must also meet the following criteria:

- ▶ Exceptional project safety performance
- ▶ Overcoming the challenges of a difficult project
- ▶ Innovation in construction techniques and materials
- ▶ Excellence in project management and scheduling
- ▶ Dedication to client service and customer care

AGC member firms have an opportunity to compete in several different categories, depending on the size of their firm, the type of project delivery method used, the type of construction, and contract amount of the project.

This section also features a story about the initiatives to foster workforce development in the construction industry.

— Lisa R. Schoolcraft, Industry Focus Editor



Contractors who
achieved top
marks in 2016
construction
2B-11B

T H E L I S T

General Commercial Contractors

6B

Interior Commercial Contractors

8B



Career initiatives

Jordan: We can work
together to solve
workforce problems.

11B

BUILD GEORGIA AWARDS

BUILD GEORGIA AWARDS 2017 — COMPANIES OVER \$100 MILLION



NEWELL BRANDS BUILD OUT INCLUDES ROOFTOP PATIO

- ▶ Choate Construction Co.
- ▶ Newell Brands
- ▶ Construction Management at Risk
- ▶ Interior Buildout

The 100,000-square-foot Newell Brands building features five floors of contemporary space, including a main lobby. **Choate Construction Co.**'s interior buildout of the space included a rooftop patio. The Choate team developed a technique to hold the weight of the deck.



VERTICAL EXPANSION COMPLETED UNDER SCHEDULE

- ▶ Batson-Cook Co.
- ▶ Northside Hospital Forsyth Surgery and Patient Tower Vertical Expansion
- ▶ Construction Management at Risk
- ▶ New

The vertical addition at Northside Hospital Forsyth's surgery and patient tower tested **Batson-Cook Co.**'s ability to meet the aggressive schedule, coordinate a fast-track designed job, and ensure continued operations of the hospital. Batson finished it four weeks ahead of schedule.



NEWEST SKYHOUSE COMPLETED IN 87 WEEKS

- ▶ Batson-Cook Co.
- ▶ The Atlantic House
- ▶ Construction Management at Risk
- ▶ New

Batson-Cook Co. implemented lean construction methods for its 13th SkyHouse project for Novare Group, resulting in a three-day-per-floor cycle for structural construction of the building, and project delivery in 87 weeks. The focus for the project was speed and quality.



COLLEGE HALL TAKES SHAPE FROM OLDER BUILDINGS

- ▶ Brasfield & Gorrie
- ▶ Columbus State University Frank D. Brown Hall
- ▶ Construction Management at Risk
- ▶ New

Throughout construction of the Columbus State University Frank D. Brown Hall, **Brasfield & Gorrie** encountered remnants of more than 15 different structures to include foundations, below grade walls, abandoned utility vaults and a basement from an abandoned building.



PERFORMING ARTS CENTER COMES IN UNDER BUDGET

- ▶ Carroll Daniel Construction
- ▶ Dawson County Performing Arts Center
- ▶ Construction Management at Risk
- ▶ New

The Dawson County Performing Arts Center is a new 45,000-square-foot facility in Dawsonville that was constructed by **Carroll Daniel Construction Co.** at a construction cost of \$12.4 million. The project resulted in zero safety issues, finished on time and under budget.



STUDENT HOUSING PROJECT COMPLETED IN 15 MONTHS

- ▶ Choate Construction Co.
- ▶ Piedmont Central Student Housing - Georgia State University
- ▶ Construction Management at Risk
- ▶ New

Based on a growing demand for housing, Georgia State University's Piedmont Central Student Housing project included 1,152 beds in 320 suite- and semi-suite-style dormitory units. **Choate Construction Co.** finished the 11-story project in 15 months.



EXTRA SPECIAL PEOPLE GET EXTRA SPECIAL BUILDING

- ▶ Hogan Construction Group LLC
- ▶ Extra Special People
- ▶ Construction Management at Risk
- ▶ New

The Extra Special People building in Watkinsville is a 11,000-square-foot community center supporting children and young adults with developmental disabilities from 26 counties and two states. **Hogan Construction Group** completed the project with no lost time accidents.



GARDEN CAFE CONSTRUCTION FACED CHALLENGES

- ▶ New South Construction Co.
- ▶ Atlanta Botanical Garden - Renovations & Addition
- ▶ Construction Management at Risk
- ▶ New

The Longleaf Café and Garden House at Atlanta Botanical Garden faced weather and congested site utilities challenges. **New South Construction Co.** ensured construction remained as discrete as possible and kept visitors, employees, and delivery drivers safe during the project.



PARRISH COMPLETES GEORGIA VECTR CENTER ON TIME

- ▶ Parrish Construction Group Inc.
- ▶ Georgia Veteran Education Career Transition Resource Center (Georgia VECTR Center)
- ▶ Construction Management at Risk
- ▶ New

The Georgia VECTR Center near Warner Robins Air Force Base serves as an educational arena for veterans exiting the military and entering the civilian work force. **Parrish Construction Group Inc.** completed it on time and on budget.



MORRIS BRANDON'S ADDITION COMES IN AHEAD OF SCHEDULE

- ▶ Parrish Construction Group Inc.
- ▶ Morris Brandon Primary Center Addition
- ▶ Construction Management at Risk
- ▶ New

Parrish Construction Group Inc.'s renovation and addition to Morris Brandon Primary Center included construction of a gymnasium/auditorium, additional classrooms and other offices. Parrish was able to complete the project ahead of schedule and under budget.



HIGH SCHOOL PROJECT FINISHED WELL UNDER BUDGET

- ▶ Balfour Beatty Construction
- ▶ South Forsyth High School Addition and Renovations
- ▶ Construction Management at Risk
- ▶ Renovation

Balfour Beatty Construction completed 101,000 square feet of additions and 260,000 square feet of renovations at South Forsyth High School months ahead of schedule and hundreds of thousands of dollars under budget.



AQUARIUM'S BUSY SCHEDULE NO MATCH FOR SEA LION PROJECT

- ▶ Brasfield & Gorrie
- ▶ Georgia Aquarium Sea Lion Exhibit Construction Management at Risk
- ▶ Renovation

The sea lion exhibit was built inside the active Georgia Aquarium, which is open 365 days a year. Due to the accelerated project schedule and the need to accommodate the Georgia Aquarium's busy event schedule, **Brasfield & Gorrie** worked three shifts through the majority of the project.

AGC

Georgia

Your Construction Industry Partner

Good Workforce Development is Good Economic Development

Our Key Principles for a Sustainable Construction Workforce in Georgia

AGC Georgia coordinates with other construction industry employers to work together with all the state government groups, including the Department of Education and the Technical College System of Georgia, to continue to move these principles forward.

- » Work toward having a **coordinated statewide strategy**
- » **Increase overall state funding** to support Career, Technical & Agricultural Education initiatives
- » Provide the highest **Quality Training and Education**
- » **Consistency** of the graduates regardless of Institution
- » **Align skills** training with the job opportunities
- » Support **Work-Based Learning** with employment opportunities
- » Increase number of **students directly transitioning** from high school to the technical colleges

We look forward to a future where each student...

- ✓ knows about the opportunities that exist
- ✓ knows the pathways to get to those opportunities
- ✓ has an opportunity for economic security for themselves and their families in the future
- ✓ is able to choose the future that is right for them!

**Jump in the conversation as we work with the industry
to make a difference in construction's top priority ...
Workforce Development!**

Associated General Contractors of Georgia, Inc.
www.agcga.org 678.298.4100

AGC Georgia Appreciates the Support of our Elite Sponsors for 2017 Association Activities!

CompTrustAGC
Mutual Captive Insurance Company

iSqFt
a ConstructConnect™ company

USA
READY MIX USA

SMITH & HOWARD
Civical Public Arrangements and Advisors
Where people count
& service matters.™

**SMITH
CURRIE**

BUILD GEORGIA AWARDS

BUILD GEORGIA AWARDS 2017 — COMPANIES OVER \$100 MILLION



TIGHT SCHEDULE NO PROBLEM FOR CARROLL DANIEL

- ▶ Carroll Daniel Construction
- ▶ Huddleston Elementary School Renovations
- ▶ Construction Management at Risk
- ▶ Renovation

The renovations to Huddleston Elementary School were aggressive in both scope and schedule. **Carroll Daniel Construction** staffed the project with two superintendents who ran shifts around the clock seven days a week.



HOLDER OVERCOMES HOTEL CONVERSION CHALLENGES

- ▶ Holder Construction Group LLC
- ▶ 230 Peachtree Street Hotel Conversion
- ▶ Construction Management at Risk
- ▶ Renovation

Holder Construction Group Inc.'s team overcome unforeseen conditions in the 230 Peachtree Street hotel conversion. It worked additional shifts and re-sequenced activities to avoid adding time to the schedule.



DELAYS OVERCOME IN BROWN MIDDLE SCHOOL PROJECT

- ▶ JE Dunn Construction Co.
- ▶ Brown Middle School Additions and Modifications
- ▶ Construction Management at Risk
- ▶ Renovation

The lean processes **JE Dunn Construction** brought to the Brown Middle School project helped it overcome a slow permitting process that prevented the project from starting as scheduled. JE Dunn and its trade partners met the challenges.



MEDICAL CENTER RENOVATIONS FULL OF SURPRISES

- ▶ New South Construction Co.
- ▶ Northwest Medical Center Renovations
- ▶ Construction Management at Risk
- ▶ Renovation

Northwest Medical Center was built in the 1960s on a landfill next to I-75 and soil around the building were sinking. The renovation project uncovered even more challenges. Despite that, **New South Construction Co.** completed the project safely and on time.



KBD BUILDS FIRST GL FILM IN U.S. FOR TOPPAN USA INC.

- ▶ Kajima Building & Design Group Inc.
- ▶ Toppan Barrier Film Plant
- ▶ Design/Build
- ▶ New

KBD Group was hired to build the first GL

FILM manufacturing building in the U.S. for Toppan USA Inc. The facility, located in Griffin, produces the protective GL FILM barrier for food, beverage, medical, pharmaceutical and industrial products.



MCCARTHY DELIVERS DISTINCTIVE FACILITY TO KAISER

- ▶ McCarthy Building Cos. Inc.
- ▶ Kaiser Permanente Pershing Point IT Data Center
- ▶ Design/Build
- ▶ Renovation

McCarthy Building Cos. Inc. managed the design-build process for the demolition and infill of four floors of Pershing Point Plaza for the new home of Kaiser Permanente's regional IT Data Center. Through collaboration with McCarthy's design-build partner and its knowledge of Kaiser's construction protocols, McCarthy delivered a distinctive facility.



DESPITE DELAYS, ELEMENTARY SCHOOL COMPLETED ON TIME

- ▶ Carroll Daniel Construction
- ▶ Esther Jackson Elementary School Replacement
- ▶ Design-Bid-Build
- ▶ New

Esther Jackson is a replacement elementary school in Roswell. The project consisted of demolishing the school and all site improvements. **Carroll Daniel Construction** finished on time and on budget.



KBD GROUP COMPLETES PLANT ON TIGHT SCHEDULE

- ▶ Kajima Building & Design Group Inc.
- ▶ Beauflor Cushion Vinyl Flooring Plant
- ▶ Design-Bid-Build
- ▶ New

KBD Group was chosen by Beauflor to build its U.S. pilot plant at Beauflor's Cartersville campus. The project was completed on an aggressive schedule.



HOGAN COMPLETES PROJECT IN HEART OF DOWNTOWN LILBURN

- ▶ Hogan Construction Group LLC
- ▶ Gwinnett County/City of Lilburn Branch Library and City Hall
- ▶ Design-Bid-Build
- ▶ New

The \$11.5 million Gwinnett County/City of Lilburn Branch Library and City Hall project is in the heart of downtown Lilburn. **Hogan Construction Group** completed the project ahead of schedule.

LAND FOR SALE

Chattahoochee River Plantation

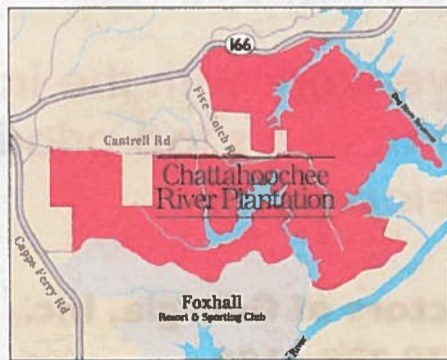
ChattahoocheeRiverPlantation.com

1153±
ACRES

THREE
LAKES

OVER SIX MILES OF LAKEFRONT PROPERTY
IN DOUGLAS COUNTY, GEORGIA

Just 25 miles southwest of Downtown Atlanta, via South Fulton Parkway. Perfect for a Private Estate, Planned Community Development, Corporate Retreat/Conference Center, or Motion Picture/Television Production Facility. Adjacent to Foxhall Resort & Sporting Club.



SITE SERVICES GROUP

LAND INVESTMENT ADVISORS

DAN GOERKE 404-290-1660 DAN@SITESERVICESGROUP.COM
CHRIS MCSHANE 770-595-4979 CHRIS@SITESERVICESGROUP.COM
PEYTON STINSON 804-350-2147 PEYTON@SITESERVICESGROUP.COM
DAVID BRANCH 404-317-1315 DAVID@SITESERVICESGROUP.COM

Find more about Chattahoochee River Plantation at:
siteservicesgroup.com/listings

BUILD GEORGIA AWARDS

BUILD GEORGIA AWARDS 2017 — COMPANIES \$50 MILLION TO UNDER \$100 MILLION

MINOR CHANGE KEEPS LOFT PROJECT IN BUDGET

- ▶ Piedmont Construction Group Inc.
- ▶ Lofts @ Mercer Landing and Mercer University Pedestrian Bridge
- ▶ Construction Management at Risk
- ▶ New

Piedmont Construction Group Inc. found using one large crane instead of two smaller cranes for the Lofts @ Mercer Landing and Pedestrian Bridge kept the bridge within budget.



ST. ANNE'S CHURCH DELIVERED WITHIN BUDGET

- ▶ R.W. Allen LLC
- ▶ St. Anne Catholic Church
- ▶ Construction Management at Risk
- ▶ New

After St. Anne's Catholic Church was stalled for three years, **R.W. Allen** took over and by using alternate construction approaches, set the project back in motion. The project was complete in budget.



OLD AQUATICS FACILITY NOW HIGH-DEMAND COMPLEX

- ▶ Leapley Construction
- ▶ Georgia State University Aquatics Building Conversion (Adaptive Reuse)
- ▶ Construction Management at Risk
- ▶ Renovation

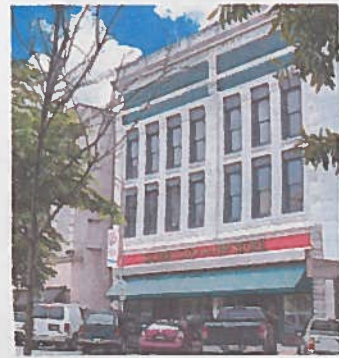
Leapley Construction transformed an aquatics facility to the high-demand GSU basketball and volleyball practice complex.



ENHANCEMENTS ADDED TO CLARKE CENTRAL HIGH SCHOOL

- ▶ Piedmont Construction Group Inc.
- ▶ Clarke Central High School
- ▶ Construction Management at Risk
- ▶ Renovation

Piedmont Construction Group Inc. renovated Clarke Central High School and added a new ROTC building and other centers.



HISTORIC BUILDING RENOVATED INTO LOFTS, KEPT ON BUDGET

- ▶ Piedmont Construction Group Inc.
- ▶ Lofts @ Silver and Piedmont Brewery
- ▶ Construction Management at Risk • Renovation

Piedmont Construction Group Inc.'s knowledge of renovating historic buildings allowed it to provide valuable insight into the preconstruction of the Lofts@Silver and Piedmont Brewery project. The project was completed on time and within budget.



INNOVATIVE SCHEDULING GETS WAREHOUSE PROJECT COMPLETE ON TIME

- ▶ Alston Construction
- ▶ Medline McDonough
- ▶ Design/Build • New

Alston Construction was able to accelerate the Medline McDonough project while structural designs were completed. The a 1.2 million-square-foot warehouse/distribution facility was delivered on time.



GEORGIA SOUTHERN CENTRAL WAREHOUSE BUILT DESPITE CHALLENGES

- ▶ Sheridan Construction
- ▶ Georgia Southern University Central Warehouse
- ▶ Design/Build • New

Sheridan Construction completed the Georgia Southern University's new central warehouse on time and in budget, and its technical know-how saved the university around \$200,000 in the process.



CLAYTON STATE STUDENT APARTMENTS FINISHED UNDER BUDGET

- ▶ Piedmont Construction Group Inc.
- ▶ Clayton State University/College Station Apartments
- ▶ Design/Build • Renovation

Piedmont Construction Group Inc. completed the Clayton State College Station Apartments despite unanticipated costs. Piedmont was able to finish the project under budget.



R.K. REDDING TAKES ON CHALLENGING SCHOOL PROJECT

- ▶ R.K. Redding Construction Inc.
- ▶ Banneker High School CTE Addition
- ▶ Design-Bid-Build • New

R.K. Redding Construction Inc.'s work on a \$10.1 million addition to the Banneker High School proved challenging, as the school remained open during the construction process.



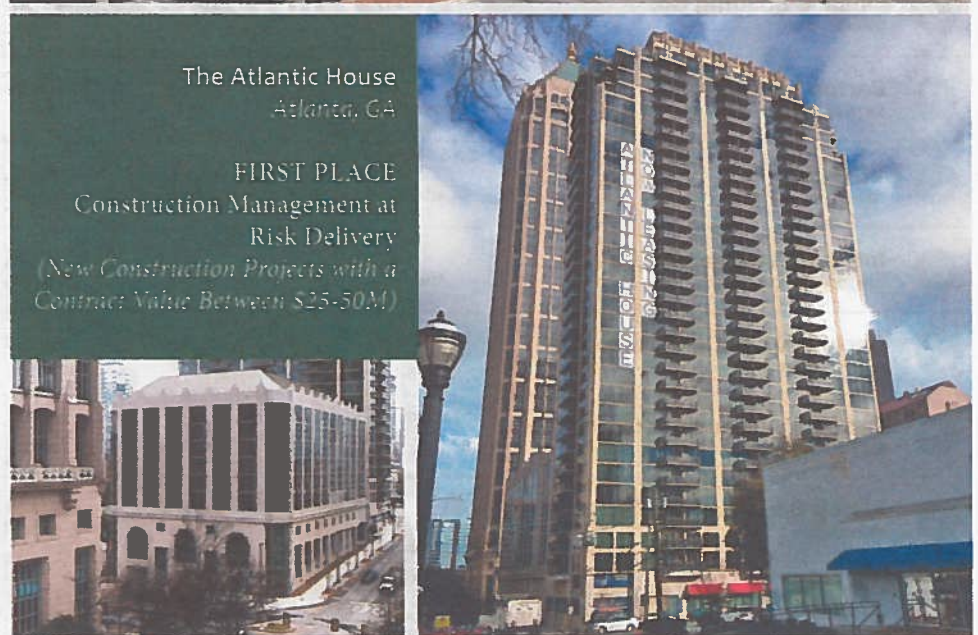
Northside Hospital Forsyth Surgery and Patient Tower Vertical Expansion
Cumming, GA

FIRST PLACE
Construction Management at Risk Delivery
(New Construction Projects with a Contract Value Over \$50M)



The Atlantic House
Atlanta, GA

FIRST PLACE
Construction Management at Risk Delivery
(New Construction Projects with a Contract Value Between \$25-50M)



BATSON-COOK

T H E L I S T

Compiled by Patsy Conn
404-249-1008, @ResearchAtBiz
pconn@bizjournals.com

ATLANTA'S TOP 25 COMMERCIAL CONTRACTORS

RANKED BY GEORGIA CONTRACT REVENUE

	Company name Website	Address	2016 Georgia contract revenue recognized ¹	2016 Atlanta contract revenue recognized ²	2016 companywide revenues recognized	% of total revenue from construction management at risk	Partial listing of areas of specialty	Partial listing of chief Atlanta officer(s)	Year est. in Atlanta
1	Holder Construction Co. holderconstruction.com	3333 Riverwood Pkwy., #400 Atlanta, GA 30339 770-988-3000	\$2.94 billion	\$656 million	\$2.94 billion	93%	corporate and commercial office, data centers, aviation, higher education, hospitality, sports, interiors	Thomas Holder David Miller	1960
2	Turner Construction Co. turnerconstruction.com/atlanta	3495 Piedmont Rd., Bldg. 11, #700 Atlanta, GA 30305 404-504-3700	\$1.28 billion	\$254 million	\$11.12 billion	90%	higher education, K-12, criminal justice, data center, mission critical, hospitality, sports, healthcare, industrial, manufacturing	Shannon Hines Mark Dent	1976
3	Brasfield & Gorrie LLC brasfieldgorrie.com	1990 Vaughn Rd. N.W., #100 Kennesaw, GA 30144 678-581-6400	\$901.44 million	\$644.51 million	\$2.41 billion	9%	commercial, education, government, healthcare, hospitality, industrial, infrastructure, mission critical, multifamily, senior living	Rob Taylor Trey Sanders Keith Johnson Rob Blalock	1984
4	The Conlan Co. conlancompany.com	1800 Pkwy. Pl., #1010 Marietta, GA 30067 770-423-8000	\$672.87 million	\$213.5 million	\$772.69 million	0%	warehouse, distribution center, light industrial, office, institutional, medical	Gary Condron Kevin Turpin	1987
5	Batson-Cook Co. ³ batson-cook.com	200 Galleria Pkwy., #1300 Atlanta, GA 30339 770-955-1951	\$528.85 million	\$271.02 million	\$687.51 million	29%	health care, office, multifamily, education, hospitality, retail, manufacturing, industrial	R. Randall Hall	1959
6	JE Dunn Construction Co. jedunn.com	2555 Cumberland Pkwy., Atlanta, GA 30339 770-551-8883	\$446.14 million	\$374.08 million	\$3.28 billion	90%	commercial, multi-family, aviation, mission critical, industrial and manufacturing, healthcare, K-12 and higher education	Dan Kaufman Mike Bartlett	1985
7	Choate Construction Co. choateco.com	8200 Roberts Dr., #600 Atlanta, GA 30350 678-892-1200	\$392.52 million	\$220.94 million	\$1.08 billion	100%	automotive, biomedical/laboratory, corporate, entertainment, government, health care, hospitality, institutional	Wm. Millard Choate Mike Hampton David Page Ben Bunyard	1989
8	Balfour Beatty US balfourbeattyus.com	600 Galleria Pkwy., #1500 Atlanta, GA 30339 678-921-6800	\$333.5 million	\$134.37 million	\$4.6 billion	67%	corporate offices, education, hospitality, residential, healthcare, rail, highway, water, interiors, multi- family, retail	Ray Bond Michael Macon	2001
9	Archer Western Contractors Ltd. walshgroup.com	2410 Paces Ferry Rd., #600 Atlanta, GA 30339 404-495-8700	\$262.36 million	\$257.06 million	\$5.05 billion	10%	office, hotel, government, waste water, highways, bridges, airports, mass transit	Casey David	1988
10	New South Construction Co. newsouthconstruction.com	1180 W. Peachtree St., #700 Atlanta, GA 30309 404-443-4000	\$254.33 million	\$210.24 million	\$306.34 million	88%	aviation, clubhouses, criminal justice, federal, industrial, higher education, K-12, municipal, multifamily, office, religious	Douglas Davidson	1990
11	DPR Construction dpr.com	3301 Windy Ridge Pkwy., #500 Atlanta, GA 30339 404-264-0404	\$197 million	\$51 million	\$4 billion	100%	higher education, commercial, healthcare, life sciences, advanced technology	Chris Bontrager	1946
12	W.H. Bass Inc. ³ whbass.com	11300 Johns Creek Pkwy., #100 Johns Creek, GA 30097 770-662-8430	\$191.62 million	\$32.01 million	\$191.62 million	0%	restaurants, convenience/fuel, retail, bank/financial	Carl Herndon Marty Robinson David Carr Dave Lee	1984
13	Juneau Construction Co. LLC juneaucc.com	3715 Northside Pkwy., Bldg. 300, #500 Atlanta, GA 30327 404-287-6000	\$185.41 million	\$185.11 million	\$267.03 million	92%	high-density mixed-use multifamily, higher education, hospitality, historic renovation, multipurpose/ recreation	Nancy Juneau Leston Juneau	1997
14	The Winter Construction Co. ³ winter-construction.com	191 Peachtree St. N.E., #2100 Atlanta, GA 30303 404-588-3300	\$185 million	\$175 million	\$195 million	85%	aviation, government, higher education, historic restoration, renovation, interiors, adaptive re- use, mixed-use, multifamily	Brent Reid Ralph Mumme	1962
15	Skanska USA usa.skanska.com	55 Ivan Allen Jr. Blvd., #600 Atlanta, GA 30308 404-946-7400	\$174.58 million	\$80.66 million	\$6.8 billion	100%	healthcare, education, sports, data centers, government, aviation, life science, mixed-use, industrial, office	Scott Cannon	1905
16	Gilbane Building Co. gilbaneco.com	3550 Peachtree Rd. N.E., #1200 Atlanta, GA 30326 678-282-1300	\$173.88 million	\$64.57 million	\$4.82 billion	98%	corporate, healthcare, higher education, K-12, mission critical, manufacturing, mixed-use	Michael Brown	1998
17	Barton Malow Co. bartonmalow.com	5900 Windward Pkwy., #130 Alpharetta, GA 30005 678-448-1100	\$148.25 million	\$141.78 million	\$2.5 billion	78%	higher education, K-12, sports/ venue, healthcare, industrial	Chris Torchia	1986
18	VCC LLC vccusa.com	5 Concourse Pkwy., #2350 Atlanta, GA 30328 770-225-1900	\$144.95 million	\$6.19 million	\$780 million	100%	retail, office, warehouse, theater, mixed-use, student housing, multifamily, hotel	Brian Core	2000
19	Integra Construction Inc. integraconstruction.com	185 Allen Rd., #100 Atlanta, GA 30328 770-953-1200	\$138.63 million	\$57.18 million	\$138.63 million	100%	office, mission critical, interiors, hospitality, multi-family, retail, industrial, medical, sports facilities	David Blackmore	1994
20	Carroll Daniel Construction Co. ³ carrolldaniel.com	921 Athens St., Gainesville, GA 30501 770-536-3241	\$134.9 million	\$131.66 million	\$134.9 million	86%	education, industrial, healthcare, hospitality, senior living, commercial	C. Brian Daniel Steve Hix Scott Oberschlake	1946
21	Parrish Construction Group Inc. parrishconstruction.com	221 Industrial Park Dr., Perry, GA 31069 478-987-5544	\$132.51 million	\$27.45 million	\$132.51 million	100%	education, health care	John Rood Jim Fallon	2010
22	Alston Construction Co. alstonco.com	3500 Lenox Rd., #501 Atlanta, GA 30326 404-921-2020	\$118.64 million	\$118.64 million	\$859.46 million	0%	industrial, manufacturing, office, retail, senior living facilities	Paul Little	1994
23	HITT Contracting Inc. hitt.com	510 14th St., #100 Atlanta, GA 30318 770-916-1166	\$105.77 million	\$73.18 million	\$1.35 billion	75%	office, industrial, higher, education, aviation, hospitality, healthcare, corporate interiors, law firms, campus development	Roger Delaney	1998
24	RA-LIN & Associates Inc. ³ ra-lin.com	101 Parkwood Cir., Carrollton, GA 30117 770-834-4884	\$91.3 million	\$42.5 million	\$91.3 million	99%	K-12, higher education, commercial, manufacturing, industrial, multifamily, hospitality, healthcare	Wilson Garrett	1972
25	Kajima Building and Design Group Inc. kbgrouppusa.com	3490 Piedmont Rd. N.E., #900 Atlanta, GA 30305 404-812-8600	\$88.99 million	\$75.56 million	\$282 million	0%	manufacturing, warehouse/ distribution, process installation, office interiors	Michael Rhinehart	1964

¹ Revenue recognized for work performed by the Georgia office(s), regardless of where the project was located.

² Projects in the 20-county metropolitan Atlanta area only.

³ Company submitted a statement of verification supporting figures.

SOURCES: Atlanta Business Chronicle research and the companies

It is not the intent of this list to endorse the participants or to imply that the size of a company indicates its quality. All information listed is based on responses from the companies to Atlanta Business Chronicle surveys. Please send corrections or additions to Patsy Conn at pconn@bizjournals.com.

BUILD GEORGIA AWARDS

BUILD GEORGIA AWARDS 2017 — COMPANIES \$50 MILLION TO UNDER \$100 MILLION

AUTO DEALERSHIP REBUILT, REPAIRED

- Sheridan Construction
- Five Star Chrysler Dodge Jeep Ram - Macon
- Design-Bid-Build • New

Sheridan Construction successfully completed a design/bid/build project to completely rebuild an automobile dealership, Five Star Chrysler Dodge Jeep Ram in Macon, while it remained open for business.



STORAGE FACILITY CREATED FROM EYESORE

- Alston Construction
- Creekside Industrial - Lawrence Avenue
- Design-Bid-Build • Renovation

Alston Construction helped turn Creekside Industrial - Lawrence Avenue from a community eyesore to a new storage facility. The facility also needed to be built as fast as possible and provide access for future tenants.



LIBRARY NOW PUBLIC DEFENDER'S OFFICE

- R.W. Allen LLC
- Augusta Public Defender's Office
- Design-Bid-Build • Renovation

The Augusta Public Defender's Office was a renovation of the two-story Augusta Public Library. Creativity on the part of **R.W. Allen LLC** was the most important aspect of the job.



BUILD GEORGIA AWARDS 2017 — COMPANIES \$20 MILLION TO UNDER \$50 MILLION

LATE START NO PROBLEM FOR BOOKSTORE

- Lusk & Co. Inc.
- Kennesaw State University - Marietta Bookstore
- Construction Management at Risk
- Interior Buildout

Lusk & Co.'s KSU Bookstore project's biggest challenge was starting in early July and having to be complete by fall semester. The project included both technical and logistical challenges.



CHURCH, DAY SCHOOL CREATE CHALLENGES

- Duffey Southeast
- Whitmire Pavilion at Sandy Springs Christian Church
- Construction Management at Risk • New

Duffey Southeast worked through a tight, active church and day school to complete the Whitmire Pavilion at Sandy Springs Christian Church on time and within budget.



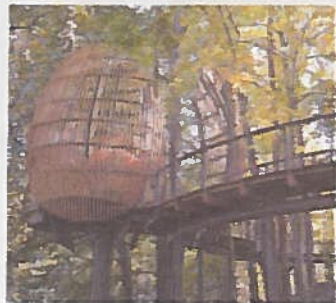
CHURCH EXPANSION DELIVERED ON TIME

- Van Winkle Construction
- Compassion Christian Church
- Construction Management at Risk • New

Compassion Church in Savannah had an aggressive growth plan to open three new campuses in two years and build a new sanctuary at its main campus. **Van Winkle Construction** completed it on time.



MINIMUM IMPACT TO FERNBANK WHILE BUILDING WILDWOODS



- Van Winkle Construction
- Fernbank Museum of Natural History: WildWoods
- Construction Management at Risk
- New

Van Winkle Construction worked hard to have minimum construction impact to the forest while building Fernbank's WildWoods. Extra care was also taken to make certain its jobsite was safe for workers and museum visitors.

PAULSON STADIUM GETS MAJOR UPGRADES

- Garbutt Construction Co.



- Paulson Stadium Infrastructure Improvements
- Construction Management at Risk
- Renovation

Garbutt Construction Co. was chosen as leader of the team to complete upgrades at Paulson Stadium. Bryant Field was stripped of its natural turf and recovered with Shaw's Legion 41 system, a two-inch, dual fiber system. Additional modifications to Paulson Stadium included storm water drainage, data and fiber communication needs, increased electrical requirements, and irrigation waterlines.

SUSTAINABLE PRACTICES USED TO BUILD PARKING DECK

- J.M. Wilkerson Construction Co. Inc.
- Ponce City Market Parcel F Parking Deck
- Design/Build • New

The Parcel F project consisted of two projects. The first was the stabilization and construction of retaining walls. **J.M. Wilkerson Construction Co. Inc.** worked to design/build a tieback wall capable of shoring up

an existing cast-in-place retaining wall. The second phase consisted of the construction of an eight-story, 168,000-square-foot concrete parking structure, located adjacent to the site.



Congratulations to our teams!
Thanks to the AGC for the recognition of their hard work!

1st Place Electrical Division

Projects with a contract amount between \$1 million - \$5 million



Fairburn Logistics Base & TI



Kaiser Permanent Pershing Point

MERIT AWARD



Skyland Trail

T H E L I S T

Compiled by Patsy Conn
404-249-1008, @ResearchAtBiz
pconn@bizjournals.com

ATLANTA'S TOP 25 INTERIOR COMMERCIAL CONTRACTORS

RANKED BY GEORGIA INTERIOR CONTRACT REVENUE

Rank	Company name Website / Prior rank	Address	2016 Georgia interior contract revenue recognized ¹	% of revenue built by base company ²	2016 Atlanta interior contract revenue	2016 companywide revenue	Number of Atlanta employees	Partial listing of areas of specialty	Partial listing of chief Atlanta officer(s)	Year est. in Atlanta
1	Choate Interior Construction Co. choateco.com	8200 Roberts Dr., #210 Atlanta, GA 30350 678-892-1200	\$231.32 million	52%	\$161.31 million	\$1.08 billion	171	automotive, biomedical/ laboratory, corporate, entertainment, hospitality, healthcare, institutional	Wm. Millard Choate Mike Hampton David Page Steve Soteres	1989
2	Brasfield & Gorrie LLC brasfieldgorrie.com	1990 Vaughn Rd. N.W., #100 Kennesaw, GA 30144 678-581-6400	\$195.83 million	40%	\$142.26 million	\$2.41 billion	735	aerospace, commercial, education, energy, government, healthcare, hospitality, industrial, infrastructure, mission critical	Trey Sanders Rob Taylor Keith Johnson Rob Blalock	1984
3	Holder Construction Co. holderconstruction.com	3333 Riverwood Pkwy., #400 Atlanta, GA 30339 770-988-3000	\$133.55 million	NA	\$50 million	\$2.93 billion	325	corporate office, data centers, hospitality, aviation, sports, special-use	Thomas Holder Greer Gallagher	1960
4	JE Dunn Construction Co. jedunn.com	2555 Cumberland Pkwy., Atlanta, GA 30339 770-551-8883	\$122.65 million	48%	\$99.54 million	\$3.28 billion	245	commercial, multi-family, aviation, industrial/ manufacturing, healthcare, mission critical, education	Mike Bartlett Dan Kaufman	1985
5	Humphries and Co. LLC humphriesandcompany.com	4581 S. Cobb Dr., #200 Smyrna, GA 30080 770-434-1890	\$112.19 million	0%	\$112.19 million	\$112.19 million	105	corporate office interiors, law firms, higher education, base building repositioning, data centers, retail	Scott Moore Bobby Sharitz Paul King Kirk Thompson	1981
6	HITT Contracting Inc. hitt.com	510 14th St., #100 Atlanta, GA 30318 770-916-1166	\$105.77 million	0%	\$73.18 million	\$1.35 billion	65	corporate office, industrial, higher education, aviation, hospitality, healthcare, corporate interiors	Roger Delaney	1998
7	The Conlan Co. conlancompany.com	1800 Pkwy. Pl., #1010 Marietta, GA 30067 770-423-8000	\$73.04 million	50%	\$19.78 million	\$772.69 million	50	Class A office, medical, light industrial, institutional facilities	Gary Condron David Staley	1987
8	Leapley Construction Group leapleyconstruction.com	180 Interstate N. Pkwy., #140 Atlanta, GA 30339 770-850-8711	\$72.21 million	0%	\$72.21 million	\$72.21 million	48	corporate office interiors, higher education, healthcare, biomedical, law firms	Meredith Leapley Alan Scoggins	1999
9	Skanska USA usa.skanska.com	55 Ivan Allen Jr. Blvd., #600 Atlanta, GA 30308 404-946-7400	\$61.82 million	38%	\$31.46 million	\$269.16 million	17	healthcare, education, sports, data centers, government, aviation, life science, mixed-use, industrial, office	Scott Cannon Kevin Bell	1905
10	CA South LLC ca-south.com	800 Battery Ave. S.E., #420 Atlanta, GA 30339 678-302-0606	\$54.57 million	NA	\$54.57 million	NA	55	corporate offices, law firms, non- profit, media, healthcare, mission critical, capital improvements, hospitality, retail	Brandon Cleghorn Stacy Knight	2010
11	Batson-Cook Co. ³ batson-cook.com	200 Galleria Pkwy., #1300 Atlanta, GA 30339 770-955-1951	\$54.03 million	70%	\$49.65 million	\$687.51 million	293	healthcare, manufacturing/ industrial, multifamily residential, cultural, educational, office	R. Randall Hall Kevin Appleton Jeff Turner	1959
12	The Winter Construction Co. ³ winter-construction.com	191 Peachtree St. N.E., #2100 Atlanta, GA 30303 404-588-3300	\$54 million	5%	\$54 million	\$190 million	320	office, religious, historic restoration, adaptive re-use, mixed-use, retail, restaurant, hospitality, higher education	Brent Reid Tom Nichols	1962
13	Integra Construction Inc. integraconstruction.com	185 Allen Rd., #100 Atlanta, GA 30328 770-953-1200	\$53.43 million	76%	\$21.73 million	\$138.63 million	47	office, mission critical, assisted living, multifamily, retail, industrial, medical, hospitality, sports facilities	David Blackmore	1994
14	Structor Group Inc. structorgroup.com	3200 Cobb Galleria Pkwy., #250 Atlanta, GA 30339 770-226-8096	\$45.09 million	5%	\$43.37 million	\$45.09 million	46	education, healthcare, office, specialty spaces, unique buildings	Jeff Stratton Mike Schilling Steve Hoffman	2006
15	DPR Construction dpr.com	3301 Windy Ridge Pkwy., #500 Atlanta, GA 30339 404-264-0404	\$41 million	0%	\$36 million	\$4 billion	200	healthcare, higher education, life science, commercial, advanced tech	Chris Bontrager	1946
16	Kinzey Construction Co. kinzeyconstruction.com	4200 Northside Pkwy., Bldg. 14, #300 Atlanta, GA 30327 404-814-6000	\$32.51 million	0%	\$32.51 million	\$32.51 million	37	corporate office interiors, industrial, base building modifications, medical, law firms	Brad Kinzey	1985
17	Scott Contracting LLC scott-contracting.com	2775 Premiere Pkwy., #400 Duluth, GA 30097 678-584-0423	\$32.02 million	0%	\$32.02 million	\$32.02 million	45	commercial, office, industrial, medical, dental, retail, educational, law firms, restaurants	Mark Scott Kyle Harrison	2003
18	New South Construction Co. newsouthconstruction.com	1180 W. Peachtree St., #700 Atlanta, GA 30309 404-443-4000	\$31.03 million	22%	\$31.03 million	\$306.34 million	197	aviation, clubhouses, criminal justice, federal, industrial, higher education, K-12, municipal, multifamily, office	Doug Davidson	1990
19	DLP Construction Co. Inc. dlpconstruction.com	5935 Shiloh Rd. E., #200 Alpharetta, GA 30005 770-887-3573	\$27.7 million	100%	\$9.26 million	\$27.7 million	45	retail, restaurant, office	Dennis Pigg Jr.	1996
20	Warren-Hanks Construction Co. warrenhanks.com	1736 Sands Pl. S.E., Marietta, GA 30067 770-984-0660	\$27.23 million	0%	\$27.23 million	\$27.23 million	34	healthcare facilities, Class A office interiors, medical offices, financial institutions, data centers	Gene Warren Jim Hanks	1994
21	Turner Construction Co. turnerconstruction.com/atlanta	3495 Piedmont Rd., Bldg. 11, #700 Atlanta, GA 30305 404-504-3700	\$23.9 million	5%	\$23.4 million	\$11.12 billion	175	corporate commercial interiors, renovations, higher education, criminal justice, K-12, healthcare, aviation	Nadiene McClain	1976
22	Buildrite Construction Corp. buildriteconstruction.com	600 Chastain Rd., #326 Kennesaw, GA 30144 770-971-0787	\$21.08 million	10%	\$4.08 million	\$21.08 million	23	office and Class A interiors, retail, industrial, aviation, hospitality, medical	Bryan Alexander	1982
23	Catamount Constructors Inc. catamountinc.com	1329 Northmeadow Pkwy., Roswell, GA 30076 770-518-2800	\$19.42 million	56%	NA	\$233.91 million	29	retail, industrial, office, healthcare, restaurants	John Lichtenwalter	1999
24	Asa Carlton Inc. ³ asacarlton.com	5224 Palmero Ct., Buford, GA 30518 770-945-2195	\$18.39 million	0%	\$2.79 million	\$18.39 million	68	retail, hospitality, office, medical	Nathan Artman Brannon Floyd Scott Hester Shaun Weyer	2003
25	Balfour Beatty US balfourbeattyus.com	600 Galleria Pkwy., #1500 Atlanta, GA 30339 678-921-6800	\$15.34 million	0%	\$14.96 million	\$4.6 billion	190	corporate offices, K-12 and higher education, hospitality, residential, healthcare, rail, highway, water, multi-family, retail	Ray Bond Michael Macon	2001

¹ Revenue recognized for work performed by the Georgia office(s), regardless of where the project was located. Figures do not include any base building revenue.

² Percentage of Georgia interior contract revenue recognized for a 100 percent single-tenant occupant, in a building built by the company's base building company.

³ Company submitted a statement of verification supporting figures.

NA - Not available or not applicable

SOURCES: Atlanta Business Chronicle research and the companies

It is not the intent of this list to endorse the participants or to imply that the size of a company indicates its quality. All information listed is based on responses from the companies to Atlanta Business Chronicle surveys. Please send corrections or additions to Patsy Conn at pconn@bizjournals.com.

BUILD GEORGIA AWARDS

BUILD GEORGIA AWARDS 2017 — COMPANIES \$20 MILLION TO UNDER \$50 MILLION

GWINNETT FIRE'S TRAINING FACILITY GETS UPGRADES

- ▶ Cooper & Company General Contractors
- ▶ Gwinnett County Fire Training Academy Phase II
- ▶ Design-Bid-Build • New

Cooper & Co. was part of the team that combined all of the training for the Gwinnett County Fire Department into a state-of-the-art facility. It allows training of hundreds of new recruits each year and also upgrades the county's existing facilities including a 911 center and existing training buildings.



BELTLINE'S NORTH AVENUE PLAZA HAS INTRICATE PAVER DESIGN

- ▶ J.M. Wilkerson Construction Co. Inc.
- ▶ Atlanta Beltline North Avenue Plaza
- ▶ Design-Bid-Build • New

J.M. Wilkerson Construction Co. Inc. completed the Atlanta Beltline North Avenue Plaza, a pedestrian/bike plaza. The installation of the pavers proved to be a great challenge, as the design was very intricate. There were also ADA requirements mandating the space allotted between pavers.



STAIRWELL PROJECT FINISHED EARLY

- ▶ J.M. Wilkerson Construction Co. Inc.
- ▶ Lockheed Martin B1 Building Emergency Stairwell Egress
- ▶ Design-Bid-Build • Renovation

J.M. Wilkerson Construction Co. Inc.'s work on Lockheed Martin's B1 Stairwell Emergency Egress project was completed a year ahead of schedule.



MACHINING MALL BLENDS OLD AND NEW

- ▶ Cork Howard Construction Co.
- ▶ Georgia Tech- Montgomery Machining Mall
- ▶ Design-Bid-Build • Renovation

Cork Howard Construction Co. incorporated some of the old shop when renovating Georgia Tech's Montgomery Machining Mall, an experimental laboratory.



BUILD GEORGIA AWARDS 2017 — COMPANIES \$5 MILLION TO UNDER \$20 MILLION

ART DECO BUILDING GETS NEW LIFE

- ▶ Albion Scaccia Enterprises LLC
- ▶ Georgia State University 25 Park Place Annex Building Renovation
- ▶ Construction Management at Risk • Renovation

Albion Scaccia Enterprises completed the multiphase Art Deco project at the GSU 25 Park Place Annex building with an exceptional safety record and significant value-added engineering.



FORMER SEARS TRANSFORMED

- ▶ Warren Associates Inc.
- ▶ Bibb County Sheriff's Investigative Center
- ▶ Construction Management at Risk • Renovation

Warren Associates Inc. was hired by the newly formed Macon Bibb County government to complete construction of a partially renovated 43,700-square-foot former Sears, Roebuck and Co. retail building.



BULK SHED HAD CHALLENGES

- ▶ Allen & Graham Inc.
- ▶ Logistec Terminal Bulk Shed No. 4
- ▶ Design/Build • New

Allen & Graham Inc. built No. 4 Terminal Bulk Shed in Brunswick. The project presented numerous challenges.



WELDING LAB RENOVATED

- ▶ Albion Scaccia Enterprises LLC
- ▶ Columbus Technical College World Class Welding Lab
- ▶ Design/Build • Renovation

Albion Scaccia renovated Columbus Tech's welding lab, despite tight schedule.



NEW SCHOOL BUILT

- ▶ Nix-Fowler Constructors Inc.
- ▶ Barack H. Obama Elementary Magnet School of Technology
- ▶ Design-Bid-Build • New

Nix-Fowler Constructors Inc. built the new Barack H. Obama Elementary Magnet School of Technology on time.



PRISON PROJECT CHALLENGING

- ▶ Warren Associates Inc.
- ▶ Georgia Department of Corrections Medical Services Remodel
- ▶ Design-Bid-Build • Renovation

Warren Associates Inc. renovated a medical services facility in the center of the Georgia State Prison despite challenges.

BUILD GEORGIA AWARDS 2017 — COMPANIES UNDER \$5 MILLION

DERUCKI SALVAGES MATERIALS

- ▶ Derucki Construction Co.
- ▶ 2282 & 2300 Defoor Hills
- ▶ Construction Management at Risk • Renovation

Derucki Construction Co. salvaged and reused steel and masonry where possible in the Defoor Hills project, even though the project did not seek green certification.



MAYBERRY ELECTRIC, INC

BUILDING SUCCESS TOGETHER

PROVIDING QUALITY ELECTRICAL SERVICES

1ST PLACE WINNER

2017 AGC BUILD GEORGIA AWARD



BOMA
GOLD
SPONSOR

IFMA
BRONZE
SPONSOR

- Commercial
- Medical
- Data Center
- Voice/Data/Video
- Design/Build
- 24 Hour Service
- Emergency Power
- Power Conditioning
- Energy Controls
- Outdoor Lighting
- Power Distribution
- Infrared Surveys

24 Hour Service Hotline
(404) 645-7373

www.mayberryelectric.com • (404) 799-3334

BUILD GEORGIA AWARDS

BUILD GEORGIA AWARDS 2017 - SPECIALTY



GRANITE PAVERS PROVE NO PROBLEM FOR ATHENA

- ▶ Athena Construction Group Inc.
- ▶ The Atlanta Beltline - North Avenue Plaza Granite Pavers
- ▶ Landscape

Putting down granite pavers on the Atlanta Beltline was one of the most difficult jobs ever completed at **Athena Construction Group Inc.** because creating circular patterns with square blocks that intersect over and over again required a craftsmanship that is almost a lost art. The trick to the circles was patience. The project was delivered without injury or delay.



TIGHT DEADLINE, JOB SITE OVERCOME AT MILTON CITY HALL

- ▶ Harrison Contracting Co. Inc.
- ▶ Milton City Hall
- ▶ Finishes/Painting

Throughout the Milton City Hall project,

Harrison Contracting Co. Inc. worked diligently on the job, which was completed on time with no incidents, despite tight deadlines and a tight job site.



RAIN BIGGEST ISSUE TO SUWANEEN GREEN BORE PROJECT

- ▶ Brent Scarbrough & Co. Inc.
- ▶ Suwanee Green Bore
- ▶ Sitework

One of the more difficult challenges of the Suwanee Green Bore project for **Brent Scarbrough & Co. Inc.** proved to be building a dam to reroute Suwanee Creek twice after a rain event washed out the first dam. Over 50 tons of sand bags were brought in and used to dam the creek while two double 12-foot pumps rerouted the water for a very successful second try.



GYM PROJECT FACED SPACE, HUMIDITY CHALLENGES

- ▶ Harrison Contracting Co. Inc.

- ▶ Cristo Rey
- ▶ Finishes/Painting

Cristo Rey is a college prep and work study high school that opened in 2014, but quickly outgrew its Midtown space. Students and faculty raised nearly \$12 million dollars and the extra funds were used to turn a parking deck into a gym. Working on the gym, **Harrison Contracting Co. Inc.** had equipment restraints near neighboring buildings and humidity issues that caused freshly painted walls to peel when applying accent stripes.



MODIFIED DESIGNS DON'T DERAIL ATHLETIC FIELD JOB

- ▶ Sports Turf Co.
- ▶ Burke County High School's Football Stadium
- ▶ Athletic Field

Burke County High School's football stadium involved a lot of up front planning. Through the process, **Sports Turf Co.** was able to overcome challenges, including protecting an existing track, and modified designs.



FANNIE MAE OFFICE SUITE HAD AGGRESSIVE SCHEDULE

- ▶ Mayberry Electric Inc.
- ▶ Fannie Mae
- ▶ Electrical

Mayberry Electric Inc. was selected to perform the electrical installation for the high profile Fannie Mae office build out by Warren Hanks Construction Co. and Cushman Wakefield Project Management. The suite was to be a test design for Fannie Mae's future offices in other cities throughout the U.S. The project had an extremely aggressive schedule.



GRANITE CREATES CHALLENGE FOR RETAIL SITE

- ▶ Brent Scarbrough & Co. Inc.
- ▶ The Overlook
- ▶ Sitework

Brent Scarbrough & Co. Inc. was faced with building a retail center on top of a blue granite site in Peachtree City. The Overlook project consisted of blasting, processing and crushing 30,000 yards of rock in addition to working with three separate general contractors that were selected to build separate projects on the 18-acre site.



AIRPORT TRAFFIC OVERCOME ON LANDSCAPE PROJECT

- ▶ Athena Construction Group Inc.
- ▶ The Inbound Roadway Improvements at Hartsfield-Jackson Atlanta International Airport
- ▶ Landscape

The Hartsfield-Jackson Atlanta International Airport Inbound Roadway Improvements were designed to help elevate congestion when traveling to and from the world's busiest airport. The site sits on the west side of the property and is the gateway to domestic travel. **Athena Construction Group Inc.** came in to plan, design and install the landscaped site, using native material, for \$1.2 million.



SPORTS TURF MET CHALLENGES TO COMPLETE ATHLETIC FIELD

- ▶ Sports Turf Co.
- ▶ Gilmer High School's Football Stadium
- ▶ Athletic Field

Gilmer High School's track and field is a one-of-a-kind facility in Georgia constructed by **Sports Turf Co.** It features a synthetic surface that is the highest face weight synthetic turf system in use in the state so athletes compete on the surface of the fibers instead of on rubber infill. This more closely replicates a cleat's contact with a natural grass field. Despite the unpredictable weather and strict timeline, Sports Turf constructed the facility on time and within budget.

CONTINUED ON NEXT PAGE



Airports and Military Infrastructure

From runways to sidewalks, renovations to new construction, roads to parking, or solar to stamped concrete, you name it!



Precision 2000, Inc.

Special Construction

Renovations

Commercial & Public Works

BUILD GEORGIA AWARDS

CONTINUED FROM PREVIOUS PAGE



WAREHOUSE'S LARGE SITE CREATES LOGISTICS ISSUES

- ▶ Eckardt Electric Co.
- ▶ Fairburn Logistics Base & TI
- ▶ Electrical

Eckardt Electric Co. was selected by Skanska to build a new, 1 million-square-foot warehouse and distribution facility for a confidential client in Fairburn. The large site presented challenges. Eckardt assembled a fleet of gators, golf carts, and trucks to move men and materials from one side of the site to the other, saving the 20 minutes it could take to walk one side of the building to the other. Another challenge on the project was the schedule. Due to owner demands, the schedule for the tenant buildout portion of the project was compressed from 12 months to five months.



OLDER BUILDING RENOVATED TO OPEN OFFICE CONCEPT

- ▶ Eckardt Electric Co.
- ▶ Kaiser Permanente Pershing Point
- ▶ Electrical

Eckardt Electric Co. was selected by McCarthy to renovate four floors of office

space for Kaiser Permanente in the Pershing Point Building in Midtown Atlanta. The Pershing Point building is an older building that housed traditional office space. Kaiser wanted to modernize the space to create a more open office concept. The design featured specialty fixtures that can be a challenge in older buildings. Working in an active office building also meant restrictions were placed on deliveries. The building had only one loading dock on a narrow street that was also used by all building tenants. Eckardt and McCarthy worked closely to stay within budget.

Initiatives promote skilled construction workforce

BY MARTIN SINDERMAN
Contributing writer

Faced with a growing shortage of skilled individuals that can fill jobs in high-demand industries, the state of Georgia and industry organization are ramping up their workforce development efforts.



Mike Dunham

The problem is particularly acute in the state's construction industry, where an aging workforce is a major contributor to an increasing scarcity of well-trained workers, notes Mike Dunham, CEO of the Georgia chapter of **Associated General Contractors of America (AGC)**, a professional trade association representing the commercial construction industry across the nation. "The baby boomers are coming of age," Dunham said, "and in our industry and others, for every four or five people that are 'aging out' and retiring, we are seeing only one new person entering construction."

The problem is widespread. In a mid-2016 AGC survey of U.S. construction firms, more than two-thirds of 1,459 respondents said they are having difficulty filling hourly craft (e.g., skilled labor) positions.

Survey results showed that these worker shortages are the most severe in the Midwest, where 77 percent of contractors reported having a hard time filling those positions, followed by the South, with 74 percent; 71 percent in the West; and 57 percent in the Northeast.

"The aging problem is hitting every trade in the construction industry: masons, electricians, cement finishers," said Dunham. "We need more of all of them."

Age is also taking its toll on the ranks of construction supervisors. Dunham said some 60 percent of the construction superintendents in Georgia are over 50 and 26 percent of them are older than 60.

"If it takes 5 to 10 years to 'grow' a superintendent who can walk onto a site and get, for example, a \$40 million high school built, then we are faced with supervision issues that are going to take a decade to resolve," said Dunham.

The skilled-worker shortage in the construction industry has major implications for business in Georgia, he said.

A short supply of labor drives up the price of new development, he said. "And at some point, you just can't find the people to get the job done." And at the same time, businesses need facilities for starting up, functioning and growing, "but that doesn't happen unless we build for them."

Part of the solution to this problem is educating younger people about opportunities in the construction business, in hopes that they will be attracted to pursuing skills training and jobs in this area.

At AGC Georgia, "We are working hard to get into the schools and talk with young men and women and their parents in what we call the 'K-12 pipeline,' and tell them about career paths, and the opportunities to make a very good living in the construction industry," he said.

There are state agencies that are also addressing this problem as it impacts construction and other industries.

Created by Gov. Nathan Deal in 2014, Georgia's High Demand Career Initiative (HDCI) started out by bringing state partners involved in training Georgia's future workforce – primarily the **University System of Georgia** and the **Technical College System of Georgia** – to hear directly from the private sector about what specific needs they have, from a workforce perspective, in terms of degrees/majors, certificates, courses, and skill sets.

Over past year or so, HDCI has created five task forces for the film, logistics, aerospace, IT, and construction industries, each of which is comprised of at least 50 percent business representatives, with the rest coming from the worlds of education, economic development and workforce development.

"The goal for each task force is to get



Jamie Jordan

representatives of business and industry, along with our workforce partners, to put their heads together to figure out what Georgia can do, above and beyond what we do now, to meet the workforce needs of

industries that are critical to our state's economy, as well as find innovative solutions that will put us ahead of competing states," said Jamie Jordan, HDCI program manager.

HDCI's construction task force was launched in May. "More than 80 people from all different sectors of the industry met to begin the discussion about how we can work together to solve workforce issues facing construction," Jordan said.

The **Georgia Department of Economic Development's** workforce division has launched Trade Five, a skilled-trade initiative that began life in 2012 under the name "Go Build Georgia."

Trade Five is an awareness campaign designed to dispel the misconceptions that jobs within the skilled trades that drive construction, manufacturing, telecommunications, energy and logistics are "dirty" and unattractive, but rather promote them as lucrative, lasting career opportunities that exist within these key industries across the state.

"The young people that comprise the future workforce generally do not have a good understanding of, and they don't appreciate, what these jobs have to offer, said Georgia Department of Economic Development Deputy Commissioner Ben Hames, "and we have to get the word out about promising opportunities in these areas."

2017
Build Georgia
Awards


Atlanta Botanical Garden


Northwest Medical Center

Fast
Resolving

Building Award Winning Projects



NEW SOUTH CONSTRUCTION
Building Value...Building Trust Since 1990


CLUBHOUSES


LOCAL GOVERNMENT


OFFICE BUILDINGS


MULTIFAMILY


HEALTHCARE


HIGHER EDUCATION


STUDENT HOUSING


RELIGIOUS


SPORTS


AVIATION


INDUSTRIAL


SENIOR LIVING


CRIMINAL JUSTICE


ENTER./INNOV.


SPECIAL USE

www.newsouthconstruction.com

404.443.4000

ONE BUSINESS CHRONICLE. MANY MARKETING SOLUTIONS.

Providing Multimedia Solutions To Fit Any Marketing Objective



To Become A Marketing Partner Contact Joey Powell:
(404) 249-1011 or jpowell@bizjournals.com

AtlantaBusinessChronicle.com